

Product datasheet for **TA373609S**

Amyloid Precursor Protein (APP) Rabbit Polyclonal Antibody

Product data:

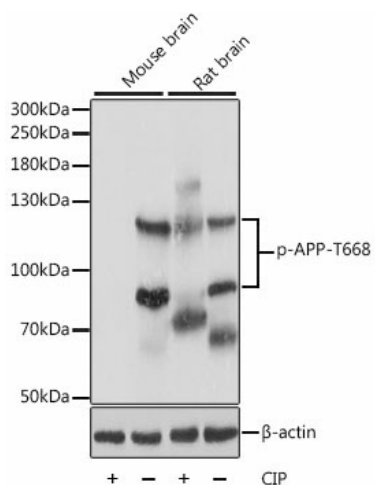
Product Type:	Primary Antibodies
Applications:	WB
Recommended Dilution:	WB,1:500 - 1:2000
Reactivity:	Mouse, Rat
Modifications:	Phospho T668
Host:	Rabbit
Isotype:	IgG
Clonality:	Polyclonal
Immunogen:	A phospho specific peptide corresponding to residues surrounding T668 of human APP
Formulation:	Buffer: PBS with 0.02% sodium azide,50% glycerol,pH7.3.
Concentration:	lot specific
Purification:	Affinity purification
Conjugation:	Unconjugated
Storage:	Store at -20°C. Avoid freeze / thaw cycles.
Stability:	Shelf life: one year from despatch.
Predicted Protein Size:	34kDa/72-86kDa
Gene Name:	amyloid beta precursor protein
Database Link:	P05067
Background:	This gene encodes a cell surface receptor and transmembrane precursor protein that is cleaved by secretases to form a number of peptides. Some of these peptides are secreted and can bind to the acetyltransferase complex APBB1/TIP60 to promote transcriptional activation, while others form the protein basis of the amyloid plaques found in the brains of patients with Alzheimer disease. In addition, two of the peptides are antimicrobial peptides, having been shown to have bacteriocidal and antifungal activities. Mutations in this gene have been implicated in autosomal dominant Alzheimer disease and cerebroarterial amyloidosis (cerebral amyloid angiopathy). Multiple transcript variants encoding several different isoforms have been found for this gene.



[View online »](#)

Synonyms: A4; AAA; ABPP; AD1; APPI; CTFgamma; CVAP; OTTHUMP00000096096; PN-II; PN2; PreA4

Product images:



Western blot analysis of extracts of various cell lines, using Phospho-APP-T668 antibody ([TA373609]) at 1:1000 dilution. Mouse brain lysate were treated by CIP (20ul CIP for each 400ul cell lysate) at 37°C for 1 hour. Rat brain lysate were treated by CIP (20ul CIP for each 400ul cell lysate) at 37°C for 1 hour. |Secondary antibody: HRP Goat Anti-Rabbit IgG (H+L) at 1:10000 dilution. |Lysates/proteins: 25ug per lane. |Blocking buffer: 3% BSA. |Detection: ECL Basic Kit . |Exposure time: 1s.