

## Product datasheet for **TA373601**

### Apoe Rabbit Polyclonal Antibody

#### Product data:

|                         |   |
|-------------------------|---|
| Product Type:           | Primary Antibodies                                      |
| Applications:           | IF, WB  |
| Recommended Dilution:   | WB,1:500 - 1:2000<br>IF,1:50 - 1:200                    |
| Reactivity:             | Human, Mouse  |
| Modifications:          | Unmodified  |
| Host:                   | Rabbit  |
| Isotype:                | IgG   |
| Clonality:              | Polyclonal  |
| Immunogen:              | A synthetic peptide of mouse Apoe                       |
| Formulation:            | Buffer: PBS with 0.02% sodium azide,50% glycerol,pH7.3. |
| Concentration:          | lot specific  |
| Purification:           | Affinity purification                                   |
| Conjugation:            | Unconjugated  |
| Storage:                | Store at -20°C. Avoid freeze / thaw cycles.             |
| Stability:              | Shelf life: one year from despatch.                     |
| Predicted Protein Size: | 36kDa   |
| Gene Name:              | apolipoprotein E  |
| Database Link:          | <a href="#">Entrez Gene 11816 Mouse P02649</a>          |

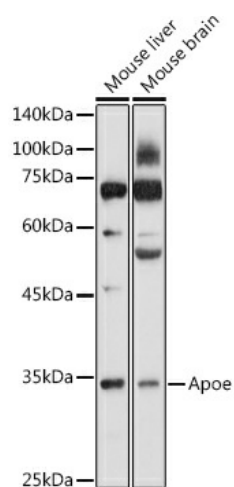
**Background:** This gene encodes a member of the apolipoprotein A1/A4/E family of proteins. This protein is involved in the transport of lipoproteins in the blood. It binds to a specific liver and peripheral cell receptor, and is essential for the normal catabolism of triglyceride-rich lipoprotein constituents. Homozygous knockout mice for this gene accumulate high levels of cholesterol in the blood and develop atherosclerosis. Different alleles of this gene have been associated with either increased risk or a protective effect for Alzheimer's disease in human patients. This gene maps to chromosome 7 in a cluster with the related apolipoprotein C1, C2 and C4 genes. [provided by RefSeq, Apr 2015]



[View online »](#)

Synonyms: AD2; Apo-E; LDLCQ5; LPG; MGC1571

### Product images:



Western blot analysis of extracts of various cell lines, using ApoE antibody (TA373601) at 1:1000 dilution. | Secondary antibody: HRP Goat Anti-Rabbit IgG (H+L) at 1:10000 dilution. | Lysates/proteins: 25ug per lane. | Blocking buffer: 3% nonfat dry milk in TBST. | Detection: ECL Basic Kit . | Exposure time: 30s.