

## Product datasheet for **TA373595S**

### **APOBEC3G Rabbit Polyclonal Antibody**

#### **Product data:**

Product Type:	Primary Antibodies
Applications:	ELISA, ICC/IF, IHC, WB
Recommended Dilution:	WB, 1:500 - 1:1000 IHC-P, 1:50 - 1:200 IF/ICC, 1:50 - 1:200 ELISA, Recommended starting concentration is 1 µg/mL. Please optimize the concentration based on your specific assay requirements.
Reactivity:	Human, Mouse, Rat
Modifications:	Unmodified
Host:	Rabbit
Isotype:	IgG
Clonality:	Polyclonal
Formulation:	PBS with 0.09% Sodium azide, 50% glycerol, pH 7.3.
Concentration:	lot specific
Purification:	Affinity purification
Conjugation:	Unconjugated
Storage:	Store at -20°C. Avoid freeze / thaw cycles.
Stability:	Shelf life: one year from despatch.
Predicted Protein Size:	46kDa
Gene Name:	apolipoprotein B mRNA editing enzyme catalytic subunit 3G
Database Link:	<a href="#">Entrez Gene 60489 Human</a> <a href="#">Q9HC16</a>



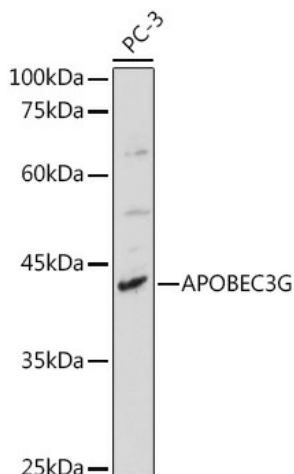
[View online »](#)

**Background:**

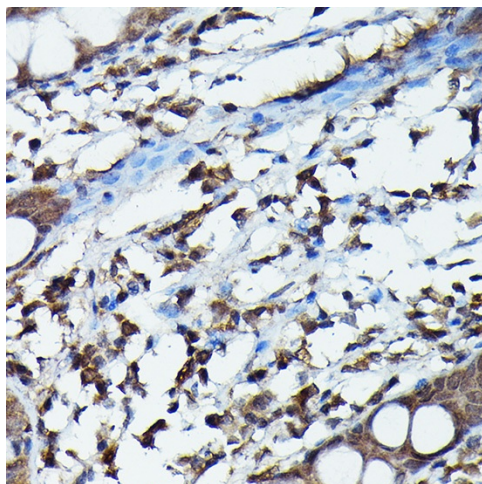
This gene is a member of the cytidine deaminase gene family. It is one of seven related genes or pseudogenes found in a cluster, thought to result from gene duplication, on chromosome 22. Members of the cluster encode proteins that are structurally and functionally related to the C to U RNA-editing cytidine deaminase APOBEC1. The protein encoded by this gene catalyzes site-specific deamination of both RNA and single-stranded DNA. The encoded protein has been found to be a specific inhibitor of human immunodeficiency virus-1 (HIV-1) infectivity.

**Synonyms:**

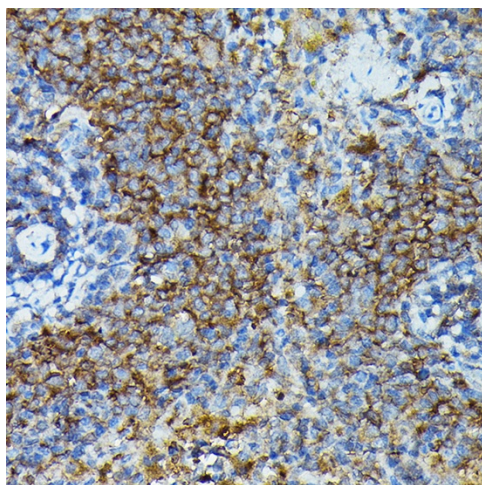
ARCD; ARP-9; ARP9; bK150C2.7; CEM-15; CEM15; dj494G10.1; FLJ12740; MDS019

**Product images:**


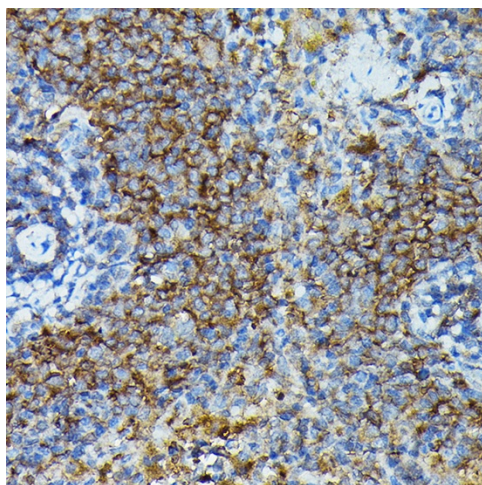
Western blot analysis of lysates from PC-3 cells



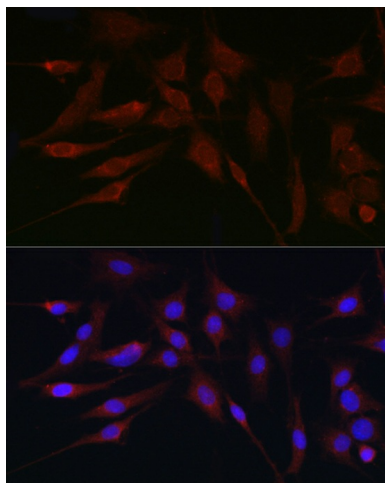
Immunohistochemistry analysis of paraffin-embedded Rat lung using APOBEC3G Rabbit pAb ([TA373595]) at dilution of 1:100 (40x lens). High pressure antigen retrieval performed with 0.01M Citrate Bufferr (pH 6.0) prior to IHC staining.



Immunohistochemistry analysis of paraffin-embedded Human colon using APOBEC3G Rabbit pAb ([TA373595]) at dilution of 1:100 (40x lens). High pressure antigen retrieval performed with 0.01M Citrate Bufferr (pH 6.0) prior to IHC staining.



Immunohistochemistry analysis of paraffin-embedded Mouse spleen using APOBEC3G Rabbit pAb ([TA373595]) at dilution of 1:100 (40x lens). High pressure antigen retrieval performed with 0.01M Citrate Bufferr (pH 6.0) prior to IHC staining.



Immunofluorescence analysis of C6 cells using APOBEC3G Rabbit pAb ([TA373595]) at dilution of 1:100 (40x lens). Secondary antibody: Cy3-conjugated Goat anti-Rabbit IgG (H+L) (AS007) at 1:500 dilution. Blue: DAPI for nuclear staining.