

## Product datasheet for **TA373591**

### APOBEC3C Rabbit Polyclonal Antibody

#### Product data:

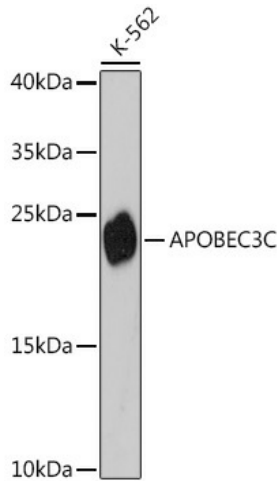
Product Type:	Primary Antibodies
Applications:	ICC/IF, IP, WB
Recommended Dilution:	WB,1:500 - 1:2000 IF,1:50 - 1:200 IP,1:50 - 1:100
Reactivity:	Human
Modifications:	Unmodified
Host:	Rabbit
Isotype:	IgG
Clonality:	Polyclonal
Immunogen:	Recombinant fusion protein containing a sequence corresponding to amino acids 1-190 of human APOBEC3C (NP_055323.2).
Formulation:	Buffer: PBS with 0.02% sodium azide,50% glycerol,pH7.3.
Concentration:	lot specific
Purification:	Affinity purification
Conjugation:	Unconjugated
Storage:	Store at -20°C. Avoid freeze / thaw cycles.
Stability:	Shelf life: one year from despatch.
Predicted Protein Size:	22kDa
Gene Name:	apolipoprotein B mRNA editing enzyme catalytic subunit 3C
Database Link:	<a href="#">Entrez Gene 27350 Human Q9NRW3</a>
Background:	This gene is a member of the cytidine deaminase gene family. It is one of seven related genes or pseudogenes found in a cluster thought to result from gene duplication, on chromosome 22. Members of the cluster encode proteins that are structurally and functionally related to the C to U RNA-editing cytidine deaminase APOBEC1. It is thought that the proteins may be RNA editing enzymes and have roles in growth or cell cycle control.



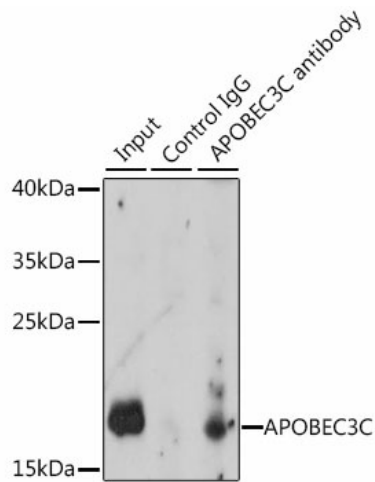
[View online »](#)

Synonyms: APOBEC1-like; APOBEC1L; ARDC2; ARDC4; ARP5; bK150C2.3; MGC19485; PBI

**Product images:**



Western blot analysis of extracts of K-562 cells, using APOBEC3<sup>C</sup> antibody (TA373591) at 1:3000 dilution. | Secondary antibody: HRP Goat Anti-Rabbit IgG (H+L) at 1:10000 dilution. | Lysates/proteins: 25ug per lane. | Blocking buffer: 3% nonfat dry milk in TBST. | Detection: ECL Basic Kit. | Exposure time: 90s.



Immunoprecipitation analysis of 200ug extracts of K-562 cells, using 3 ug APOBEC3<sup>C</sup> antibody (TA373591). Western blot was performed from the immunoprecipitate using APOBEC3<sup>C</sup> antibody (TA373591) at a dilution of 1:1000.