

## Product datasheet for **TA373589S**

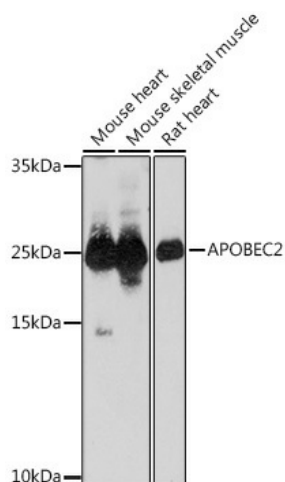
### APOBEC2 Rabbit Polyclonal Antibody

#### Product data:

Product Type:	Primary Antibodies
Applications:	ELISA, WB
Recommended Dilution:	WB, 1:500 - 1:2000 ELISA, Recommended starting concentration is 1 µg/mL. Please optimize the concentration based on your specific assay requirements.
Reactivity:	Human, Mouse, Rat
Host:	Rabbit
Isotype:	IgG
Clonality:	Polyclonal
Formulation:	Buffer: PBS with 0.02% sodium azide, 50% glycerol, pH 7.3.
Concentration:	lot specific
Purification:	Affinity purification
Conjugation:	Unconjugated
Storage:	Store at -20°C. Avoid freeze / thaw cycles.
Stability:	Shelf life: one year from despatch.
Predicted Protein Size:	26kDa
Gene Name:	apolipoprotein B mRNA editing enzyme catalytic subunit 2
Database Link:	<a href="#">Entrez Gene 10930 Human Q9Y235</a>
Background:	Enables cytidine deaminase activity and identical protein binding activity. Involved in DNA demethylation. Acts upstream of or within cytidine to uridine editing. Predicted to be active in cytoplasm and nucleus.
Synonyms:	ARCD1; ARP1



[View online »](#)

**Product images:**

Western blot analysis of various lysates using APOBEC2 Rabbit pAb ([TA373589]) at 1:1000 dilution.

Secondary antibody: HRP-conjugated Goat anti-Rabbit IgG (H+L) (AS014) at 1:10000 dilution.

Lysates/proteins: 25µg per lane.

Blocking buffer: 3% nonfat dry milk in TBST.

Detection: ECL Basic Kit (RM00020).

Exposure time: 30s.