

Product datasheet for **TA373584**

Apolipoprotein A II (APOA2) Rabbit Polyclonal Antibody

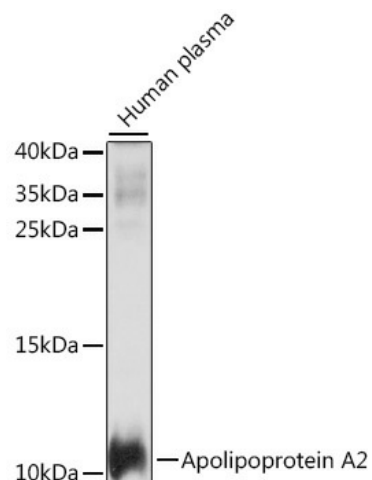
Product data:

Product Type:	Primary Antibodies
Applications:	ICC/IF, WB
Recommended Dilution:	WB, 1:500 - 1:2000 IF, 1:50 - 1:200
Reactivity:	Human, Mouse, Rat
Modifications:	Unmodified
Host:	Rabbit
Isotype:	IgG
Clonality:	Polyclonal
Immunogen:	A synthetic peptide corresponding to a sequence within amino acids 1-100 of human Apolipoprotein A2 (NP_001634.1).
Formulation:	Buffer: PBS with 0.02% sodium azide, 50% glycerol, pH 7.3.
Concentration:	lot specific
Purification:	Affinity purification
Conjugation:	Unconjugated
Storage:	Store at -20°C. Avoid freeze / thaw cycles.
Stability:	Shelf life: one year from despatch.
Predicted Protein Size:	11kDa
Gene Name:	apolipoprotein A2
Database Link:	Entrez Gene 336 Human P02652
Background:	This gene encodes apolipoprotein (apo-) A-II, which is the second most abundant protein of the high density lipoprotein particles. The protein is found in plasma as a monomer, homodimer, or heterodimer with apolipoprotein D. Defects in this gene may result in apolipoprotein A-II deficiency or hypercholesterolemia.
Synonyms:	Apo-AII; ApoA-II

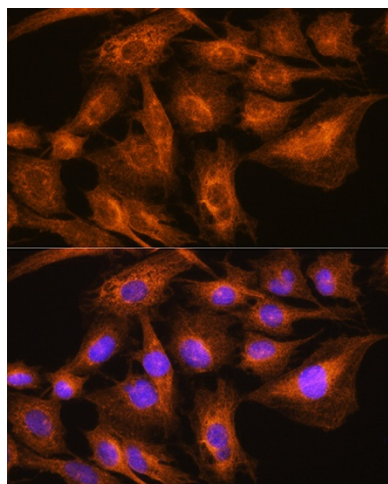


[View online »](#)

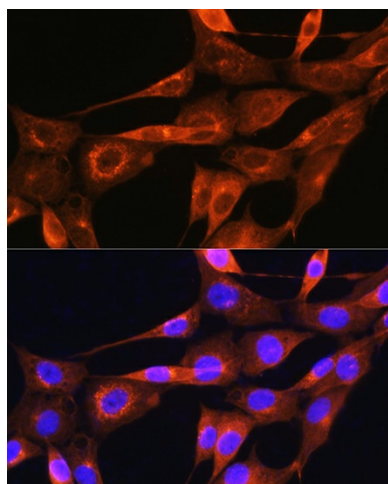
Product images:



Western blot analysis of extracts of human plasma, using Apolipoprotein A2 antibody (TA373584) at 1:1000 dilution. |Secondary antibody: HRP Goat Anti-Rabbit IgG (H+L) at 1:10000 dilution. |Lysates/proteins: 25ug per lane. |Blocking buffer: 3% nonfat dry milk in TBST. |Detection: ECL Basic Kit . |Exposure time: 1s.



Immunofluorescence analysis of C6 cells using Apolipoprotein A2 Rabbit pAb (TA373584) at dilution of 1:100. Blue: DAPI for nuclear staining.



Immunofluorescence analysis of NIH/3T3 cells using Apolipoprotein A2 Rabbit pAb (TA373584) at dilution of 1:100. Blue: DAPI for nuclear staining.

