

Product datasheet for **TA373576S**

APIP Rabbit Polyclonal Antibody

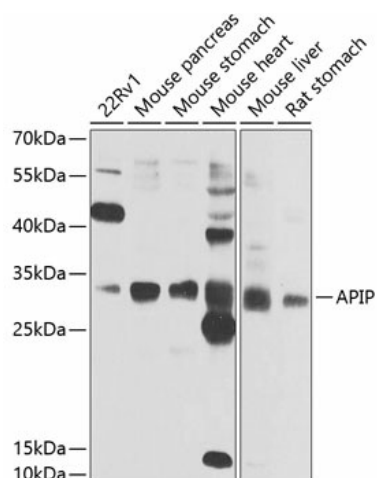
Product data:

Product Type:	Primary Antibodies
Applications:	IHC, WB
Recommended Dilution:	WB,1:500 - 1:2000 IHC,1:50 - 1:200
Reactivity:	Human, Mouse, Rat
Modifications:	Unmodified
Host:	Rabbit
Isotype:	IgG
Clonality:	Polyclonal
Immunogen:	Recombinant fusion protein containing a sequence corresponding to amino acids 1-242 of human APIP (NP_057041.2).
Formulation:	Buffer: PBS with 0.02% sodium azide,50% glycerol,pH7.3.
Concentration:	lot specific
Purification:	Affinity purification
Conjugation:	Unconjugated
Storage:	Store at -20°C. Avoid freeze / thaw cycles.
Stability:	Shelf life: one year from despatch.
Predicted Protein Size:	22kDa/27kDa
Gene Name:	APAF1 interacting protein
Database Link:	Entrez Gene 51074 Human Q96GX9
Background:	APIP is an APAF1 (MIM 602233)-interacting protein that acts as a negative regulator of ischemic/hypoxic injury (Cho et al., 2004 [PubMed 15262985]).[supplied by OMIM, Dec 2008]
Synonyms:	APIP2; CGI-29; CGI29; dj179L10.2; Mmrp19



[View online »](#)

Product images:



Western blot analysis of extracts of various cell lines, using APIP antibody ([TA373576]) at 1:1000 dilution. | Secondary antibody: HRP Goat Anti-Rabbit IgG (H+L) at 1:10000 dilution. | Lysates/proteins: 25ug per lane. | Blocking buffer: 3% nonfat dry milk in TBST. | Detection: ECL Enhanced Kit. | Exposure time: 10s.