

Product datasheet for **TA373573S**

APE1 (APEX1) Rabbit Polyclonal Antibody

Product data:

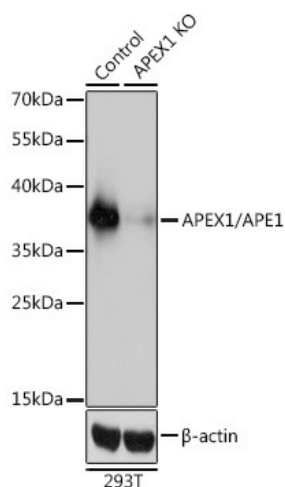
Product Type:	Primary Antibodies
Applications:	ICC/IF, IP, WB
Recommended Dilution:	WB,1:500 - 1:2000 IF,1:50 - 1:100 IP,1:50 - 1:200
Reactivity:	Human
Modifications:	Unmodified
Host:	Rabbit
Isotype:	IgG
Clonality:	Polyclonal
Immunogen:	Recombinant fusion protein containing a sequence corresponding to amino acids 1-318 of human APEX1/APE1 (NP_542380.1).
Formulation:	Buffer: PBS with 0.02% sodium azide,50% glycerol,pH7.3.
Concentration:	lot specific
Purification:	Affinity purification
Conjugation:	Unconjugated
Storage:	Store at -20°C. Avoid freeze / thaw cycles.
Stability:	Shelf life: one year from despatch.
Predicted Protein Size:	35kDa
Gene Name:	apurinic/apyrimidinic endodeoxyribonuclease 1
Database Link:	Entrez Gene 328 Human P27695
Background:	Apurinic/apyrimidinic (AP) sites occur frequently in DNA molecules by spontaneous hydrolysis, by DNA damaging agents or by DNA glycosylases that remove specific abnormal bases. AP sites are pre-mutagenic lesions that can prevent normal DNA replication so the cell contains systems to identify and repair such sites. Class II AP endonucleases cleave the phosphodiester backbone 5' to the AP site. This gene encodes the major AP endonuclease in human cells. Splice variants have been found for this gene; all encode the same protein.



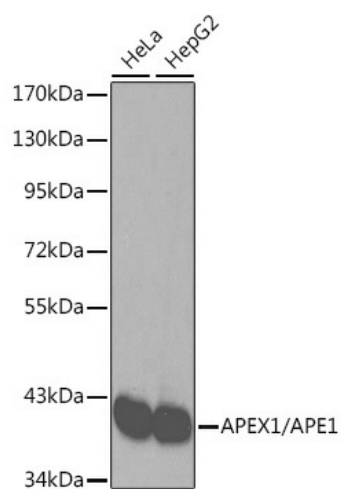
[View online »](#)

Synonyms: APE; APE-1; APE1; APEN; APEX; APX; HAP1; REF-1; REF1

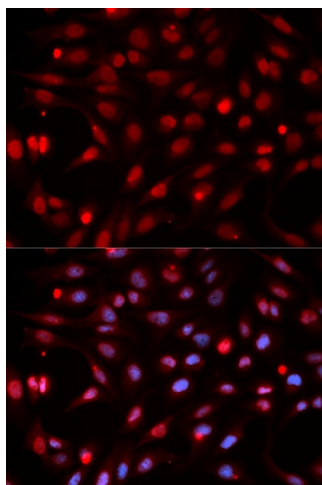
Product images:



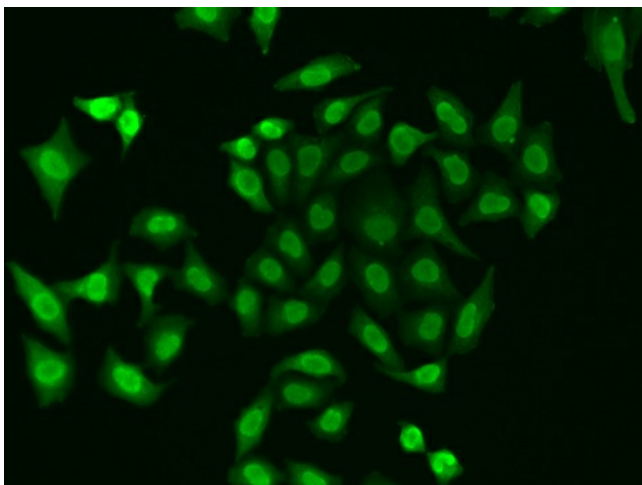
Western blot analysis of extracts from normal (control) and APEX1/APE1 knockout (KO) 293T cells, using APEX1/APE1 antibody ([TA373573]) at 1:3000 dilution. | Secondary antibody: HRP Goat Anti-Rabbit IgG (H+L) at 1:10000 dilution. | Lysates/proteins: 25ug per lane. | Blocking buffer: 3% nonfat dry milk in TBST. | Detection: ECL Basic Kit . | Exposure time: 1s.



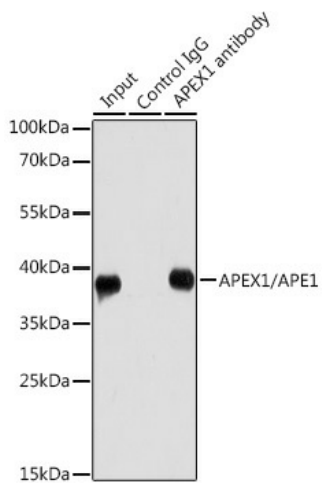
Western blot analysis of extracts of various cell lines, using APEX1/APE1 antibody ([TA373573]). | Secondary antibody: HRP Goat Anti-Rabbit IgG (H+L) at 1:10000 dilution. | Lysates/proteins: 25ug per lane. | Blocking buffer: 3% nonfat dry milk in TBST.



Immunofluorescence analysis of HeLa cells using APEX1/APE1 antibody ([TA373573]). Blue: DAPI for nuclear staining.



Immunofluorescence analysis of A549 cells using APEX1/APE1 antibody ([TA373573]).



Immunoprecipitation analysis of 200ug extracts of HeLa cells using 1ug APEX1/APE1 antibody ([TA373573]). Western blot was performed from the immunoprecipitate using APEX1/APE1 antibody ([TA373573]) at a dilution of 1:1000.