

Product datasheet for **TA373568**

AP3M1 Rabbit Polyclonal Antibody

Product data:

Product Type:	Primary Antibodies
Applications:	WB
Recommended Dilution:	WB,1:500 - 1:2000
Reactivity:	Human, Mouse, Rat
Modifications:	Unmodified
Host:	Rabbit
Isotype:	IgG
Clonality:	Polyclonal
Immunogen:	Recombinant fusion protein containing a sequence corresponding to amino acids 219-418 of human AP3M1 (NP_036227.1).
Formulation:	Buffer: PBS with 0.02% sodium azide,50% glycerol,pH7.3.
Concentration:	lot specific
Purification:	Affinity purification
Conjugation:	Unconjugated
Storage:	Store at -20°C. Avoid freeze / thaw cycles.
Stability:	Shelf life: one year from despatch.
Predicted Protein Size:	46kDa
Gene Name:	adaptor related protein complex 3 mu 1 subunit
Database Link:	Entrez Gene 26985 Human Q9Y2T2



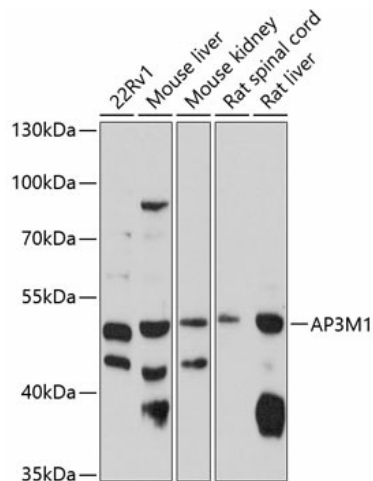
[View online »](#)

Background:

The protein encoded by this gene is the medium subunit of AP-3, which is an adaptor-related protein complex associated with the Golgi region as well as more peripheral intracellular structures. AP-3 facilitates the budding of vesicles from the Golgi membrane, and it may directly function in protein sorting to the endosomal/lysosomal system. AP-3 is a heterotetrameric protein complex composed of two large subunits (delta and beta3), a medium subunit (mu3), and a small subunit (sigma 3). Mutations in one of the large subunits of AP-3 have been associated with the Hermansky-Pudlak syndrome, a genetic disorder characterized by defective lysosome-related organelles. Alternative splicing of this gene results in multiple transcript variants.

Synonyms:

MGC22164; Mu3A-adaptin; OTTHUMP00000019860

Product images:

Western blot analysis of extracts of various cell lines, using AP3M1 antibody (TA373568) at 1:1000 dilution. | Secondary antibody: HRP Goat Anti-Rabbit IgG (H+L) at 1:10000 dilution. | Lysates/proteins: 25ug per lane. | Blocking buffer: 3% nonfat dry milk in TBST. | Detection: ECL Enhanced Kit. | Exposure time: 90s.