

Product datasheet for **TA373562**

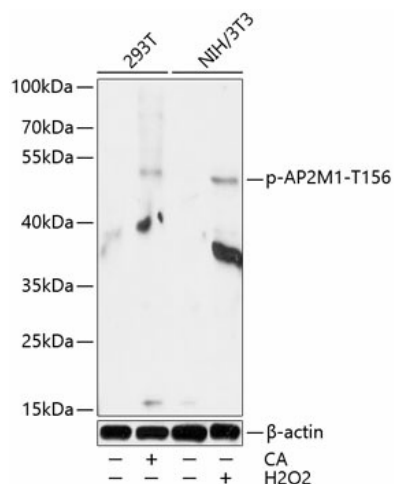
AP2M1 Rabbit Polyclonal Antibody

Product data:

Product Type:	Primary Antibodies
Applications:	WB
Recommended Dilution:	WB,1:500 - 1:2000
Reactivity:	Human, Mouse
Modifications:	Phospho T156
Host:	Rabbit
Isotype:	IgG
Clonality:	Polyclonal
Immunogen:	A synthetic phosphorylated peptide around T156 of human AP2M1 (NP_001020376.1).
Formulation:	Buffer: PBS with 0.02% sodium azide,50% glycerol,pH7.3.
Concentration:	lot specific
Purification:	Affinity purification
Conjugation:	Unconjugated
Storage:	Store at -20°C. Avoid freeze / thaw cycles.
Stability:	Shelf life: one year from despatch.
Predicted Protein Size:	49kDa
Gene Name:	adaptor related protein complex 2 mu 1 subunit
Database Link:	Entrez Gene 1173 Human Q96CW1
Background:	This gene encodes a subunit of the heterotetrameric coat assembly protein complex 2 (AP2), which belongs to the adaptor complexes medium subunits family. The encoded protein is required for the activity of a vacuolar ATPase, which is responsible for proton pumping occurring in the acidification of endosomes and lysosomes. The encoded protein may also play an important role in regulating the intracellular trafficking and function of CTLA-4 protein. Three transcript variants encoding different isoforms have been found for this gene.
Synonyms:	Adaptin-mu2; AP50; CLAPM1; KIAA0109; mu2; OTTHUMP00000210697



[View online »](#)

Product images:


Western blot analysis of extracts of 293T and NIH/3T3 cells, using Phospho-AP2M1-T156 antibody (TA373562) at 1:1000 dilution. 293T cells were treated by Calyculin A for 30 minutes after serum-starvation overnight. NIH/3T3 cells were treated by Hydrogen Peroxide (2nM) for 15 minutes after serum-starvation overnight. | Secondary antibody: HRP Goat Anti-Rabbit IgG (H+L) at 1:10000 dilution. | Lysates/proteins: 25ug per lane. | Blocking buffer: 3% BSA. | Detection: ECL Basic Kit . | Exposure time: 30s.