

Product datasheet for **TA373560**

alpha Adaptin (AP2A2) Rabbit Polyclonal Antibody

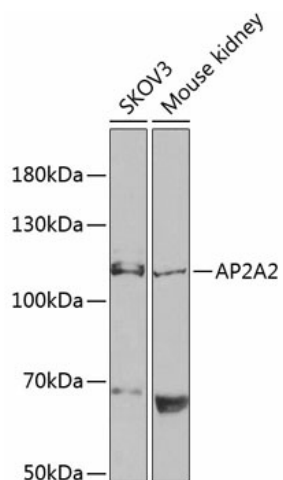
Product data:

Product Type:	Primary Antibodies
Applications:	WB
Recommended Dilution:	WB,1:500 - 1:2000
Reactivity:	Human, Mouse
Modifications:	Unmodified
Host:	Rabbit
Isotype:	IgG
Clonality:	Polyclonal
Immunogen:	Recombinant fusion protein containing a sequence corresponding to amino acids 590-939 of human AP2A2 (NP_036437.1).
Formulation:	Buffer: PBS with 0.02% sodium azide,50% glycerol,pH7.3.
Concentration:	lot specific
Purification:	Affinity purification
Conjugation:	Unconjugated
Storage:	Store at -20°C. Avoid freeze / thaw cycles.
Stability:	Shelf life: one year from despatch.
Predicted Protein Size:	73kDa/103kDa/104kDa
Gene Name:	adaptor related protein complex 2 alpha 2 subunit
Database Link:	Entrez Gene 161 Human O94973
Background:	The protein encoded by this gene is a subunit of the AP-2 adaptor protein complex, which is involved in linking lipid and protein membrane components with the clathrin lattice. This interaction supports the formation of clathrin-coated vesicles, and the encoded subunit aids in the process by binding polyphosphoinositide-containing lipids in the cell membrane.
Synonyms:	ADTAB; Alpha2-adaptin; CLAPA2; DKFZP564D1864; HIP9; HYPJ; KIAA0899



[View online »](#)

Product images:



Western blot analysis of extracts of various cell lines, using AP2A2 antibody (TA373560) at 1:1000 dilution. | Secondary antibody: HRP Goat Anti-Rabbit IgG (H+L) at 1:10000 dilution. | Lysates/proteins: 25ug per lane. | Blocking buffer: 3% nonfat dry milk in TBST.