

Product datasheet for **TA373557S**

AP1M2 Rabbit Polyclonal Antibody

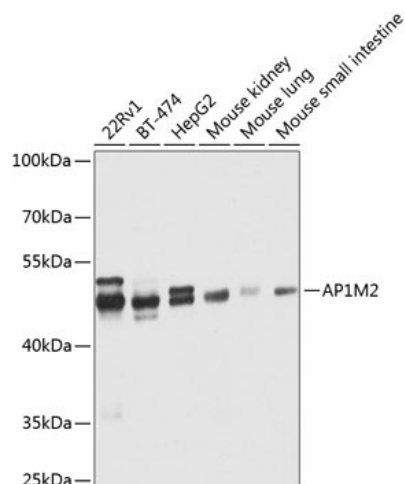
Product data:

Product Type:	Primary Antibodies
Applications:	ELISA, ICC/IF, WB
Recommended Dilution:	WB, 1:500 - 1:2000 IF/ICC, 1:50 - 1:200 ELISA, Recommended starting concentration is 1 µg/mL. Please optimize the concentration based on your specific assay requirements.
Reactivity:	Human, Mouse, Rat
Modifications:	Unmodified
Host:	Rabbit
Isotype:	IgG
Clonality:	Polyclonal
Formulation:	Buffer: PBS with 0.02% sodium azide, 50% glycerol, pH 7.3.
Concentration:	lot specific
Purification:	Affinity purification
Conjugation:	Unconjugated
Storage:	Store at -20°C. Avoid freeze / thaw cycles.
Stability:	Shelf life: one year from despatch.
Predicted Protein Size:	48kDa
Gene Name:	adaptor related protein complex 1 mu 2 subunit
Database Link:	Entrez Gene 10053 Human Q9Y6Q5
Background:	This gene encodes a subunit of the heterotetrameric adaptor-related protein complex 1 (AP-1), which belongs to the adaptor complexes medium subunits family. This protein is capable of interacting with tyrosine-based sorting signals. Alternative splicing results in multiple transcript variants.
Synonyms:	AP1-mu2; HSMU1B; MU-1B; MU1B; Mu1B-adaptin; mu2

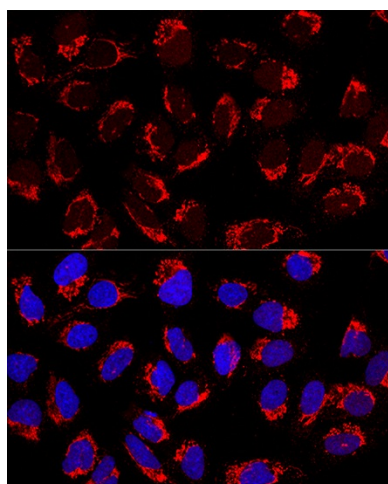


[View online »](#)

Product images:



Western blot analysis of various lysates using AP1M2 Rabbit pAb ([TA373557]) at 1:1000 dilution. Secondary antibody: HRP-conjugated Goat anti-Rabbit IgG (H+L) (AS014) at 1:10000 dilution. Lysates/proteins: 25µg per lane. Blocking buffer: 3% nonfat dry milk in TBST. Detection: ECL Enhanced Kit (RM00021). Exposure time: 1s.



Confocal immunofluorescence analysis of U2OS cells using AP1M2 Rabbit pAb ([TA373557]) at dilution of 1:200. Blue: DAPI for nuclear staining.