

## Product datasheet for **TA373557**

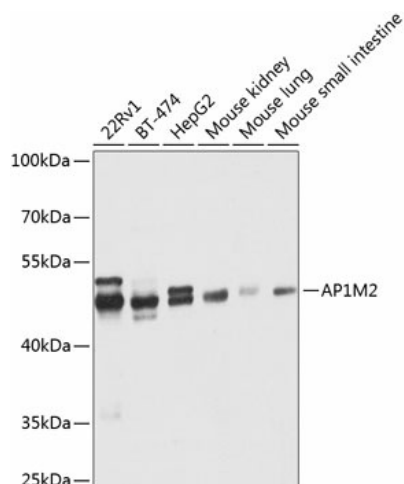
### AP1M2 Rabbit Polyclonal Antibody

#### Product data:

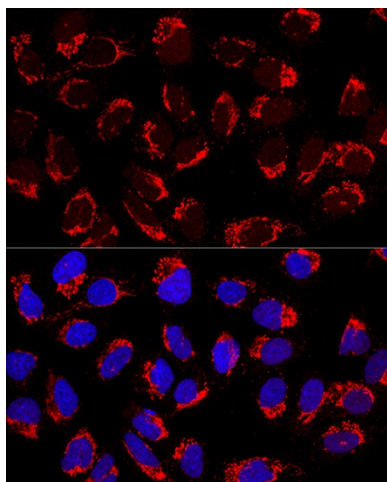
Product Type:	Primary Antibodies
Applications:	ICC/IF, WB
Recommended Dilution:	WB,1:500 - 1:2000 IF,1:50 - 1:200
Reactivity:	Human, Mouse
Modifications:	Unmodified
Host:	Rabbit
Isotype:	IgG
Clonality:	Polyclonal
Immunogen:	Recombinant fusion protein containing a sequence corresponding to amino acids 164-423 of human AP1M2 (NP_005489.2).
Formulation:	Buffer: PBS with 0.02% sodium azide,50% glycerol,pH7.3.
Concentration:	lot specific
Purification:	Affinity purification
Conjugation:	Unconjugated
Storage:	Store at -20°C. Avoid freeze / thaw cycles.
Stability:	Shelf life: one year from despatch.
Predicted Protein Size:	48kDa
Gene Name:	adaptor related protein complex 1 mu 2 subunit
Database Link:	<a href="#">Entrez Gene 10053 Human Q9Y6Q5</a>
Background:	This gene encodes a subunit of the heterotetrameric adaptor-related protein complex 1 (AP-1), which belongs to the adaptor complexes medium subunits family. This protein is capable of interacting with tyrosine-based sorting signals. Alternative splicing results in multiple transcript variants.
Synonyms:	AP1-mu2; HSMU1B; MU-1B; MU1B; Mu1B-adaptin; mu2



[View online »](#)

**Product images:**

Western blot analysis of extracts of various cell lines, using AP1M2 antibody (TA373557) at 1:1000 dilution. Secondary antibody: HRP Goat Anti-Rabbit IgG (H+L) at 1:10000 dilution. Lysates/proteins: 25ug per lane. Blocking buffer: 3% nonfat dry milk in TBST. Detection: ECL Enhanced Kit. Exposure time: 1s.



Confocal immunofluorescence analysis of U2OS cells using AP1M2 Polyclonal Antibody (TA373557) at dilution of 1:200. Blue: DAPI for nuclear staining.