

Product datasheet for **TA373536S**

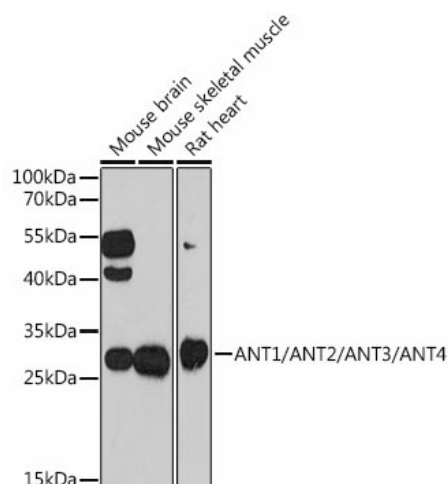
SLC25A4 Rabbit Polyclonal Antibody

Product data:

Product Type:	Primary Antibodies
Applications:	ELISA, IHC, WB
Recommended Dilution:	WB, 1:500 - 1:2000 IHC-P, 1:50 - 1:200 ELISA, Recommended starting concentration is 1 µg/mL. Please optimize the concentration based on your specific assay requirements.
Reactivity:	Human, Mouse, Rat
Modifications:	Unmodified
Host:	Rabbit
Isotype:	IgG
Clonality:	Polyclonal
Formulation:	Buffer: PBS with 0.02% sodium azide, 50% glycerol, pH 7.3.
Concentration:	lot specific
Purification:	Affinity purification
Conjugation:	Unconjugated
Storage:	Store at -20°C. Avoid freeze / thaw cycles.
Stability:	Shelf life: one year from despatch.
Predicted Protein Size:	33kDa/32kDa/35kDa
Gene Name:	solute carrier family 25 member 4
Database Link:	Entrez Gene 291 Human P12235
Background:	ANTs are the mitochondrial carrier subfamily of solute carrier proteins. ANT protein functions as a gated pore that translocates ADP from the cytoplasm into the mitochondrial matrix and ATP from the mitochondrial matrix into the cytoplasm. The protein forms a homodimer embedded in the inner mitochondria membrane.
Synonyms:	AAC1; ANT; ANT1; PEO2; PEO3; T1


[View online »](#)

Product images:



Western blot analysis of various lysates using ANT1/ANT2/ANT3/ANT4 Rabbit pAb (TA373536) at 1:1000 dilution.

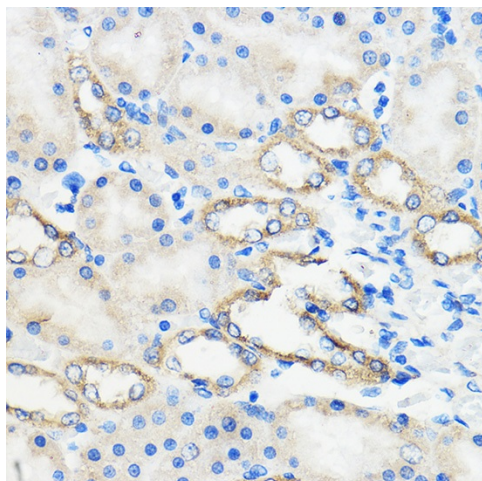
Secondary antibody: HRP-conjugated Goat anti-Rabbit IgG (H+L) (AS014) at 1:10000 dilution.

Lysates/proteins: 25µg per lane.

Blocking buffer: 3% nonfat dry milk in TBST.

Detection: ECL Enhanced Kit (RM00021).

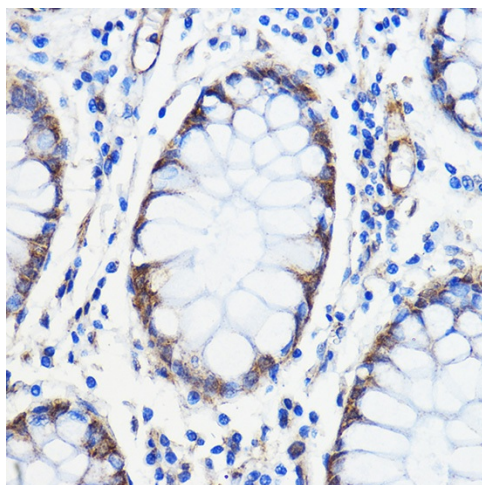
Exposure time: 150s.



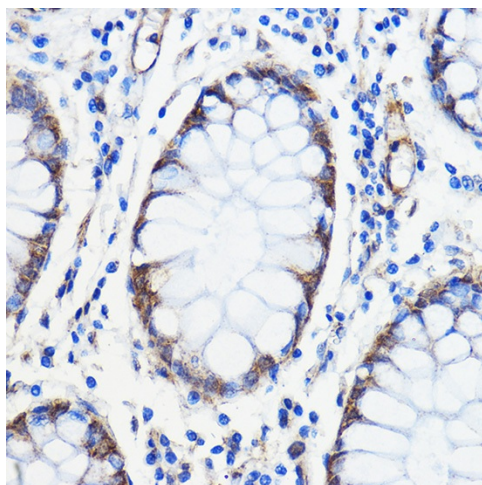
Immunohistochemistry analysis of paraffin-embedded Mouse kidney using

ANT1/ANT2/ANT3/ANT4 Rabbit pAb (TA373536) at dilution of 1:50 (40x lens).

Microwave antigen retrieval performed with 0.01M PBS Buffer (pH 7.2) prior to IHC staining.



Immunohistochemistry analysis of paraffin-embedded Rat kidney using ANT1/ANT2/ANT3/ANT4 Rabbit pAb ([TA373536]) at dilution of 1:50 (40x lens). Microwave antigen retrieval performed with 0.01M PBS Buffer (pH 7.2) prior to IHC staining.



Immunohistochemistry analysis of paraffin-embedded Human colon carcinoma using ANT1/ANT2/ANT3/ANT4 Rabbit pAb ([TA373536]) at dilution of 1:50 (40x lens). Microwave antigen retrieval performed with 0.01M PBS Buffer (pH 7.2) prior to IHC staining.