

Product datasheet for **TA373536**

SLC25A4 Rabbit Polyclonal Antibody

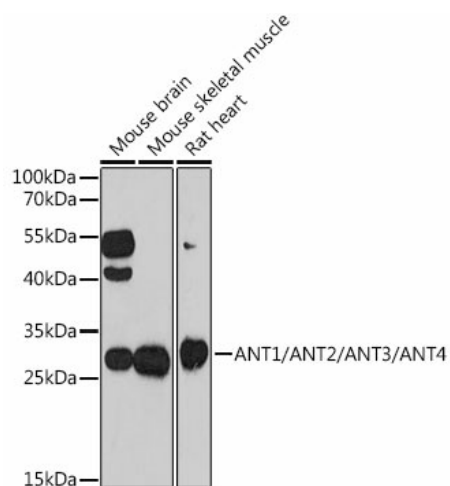
Product data:

Product Type:	Primary Antibodies
Applications:	IHC, WB
Recommended Dilution:	WB,1:500 - 1:2000 IHC,1:50 - 1:200
Reactivity:	Human, Mouse, Rat
Modifications:	Unmodified
Host:	Rabbit
Isotype:	IgG
Clonality:	Polyclonal
Immunogen:	A synthetic peptide corresponding to a sequence within amino acids 200 to the C-terminus of human ANT1 (NP_001142.2).
Formulation:	Buffer: PBS with 0.02% sodium azide,50% glycerol,pH7.3.
Concentration:	lot specific
Purification:	Affinity purification
Conjugation:	Unconjugated
Storage:	Store at -20°C. Avoid freeze / thaw cycles.
Stability:	Shelf life: one year from despatch.
Predicted Protein Size:	33kDa/32kDa/35kDa
Gene Name:	solute carrier family 25 member 4
Database Link:	Entrez Gene 291 Human P12235
Background:	ANTs are the mitochondrial carrier subfamily of solute carrier proteins. ANT protein functions as a gated pore that translocates ADP from the cytoplasm into the mitochondrial matrix and ATP from the mitochondrial matrix into the cytoplasm. The protein forms a homodimer embedded in the inner mitochondria membrane.
Synonyms:	AAC1; ANT; ANT1; PEO2; PEO3; T1



[View online »](#)

Product images:



Western blot analysis of extracts of various cell lines, using ANT1/ANT2/ANT3/ANT4 antibody (TA373536) at 1:1000 dilution. | Secondary antibody: HRP Goat Anti-Rabbit IgG (H+L) at 1:10000 dilution. | Lysates/proteins: 25ug per lane. | Blocking buffer: 3% nonfat dry milk in TBST. | Detection: ECL Enhanced Kit. | Exposure time: 150s.