

## Product datasheet for **TA373530S**

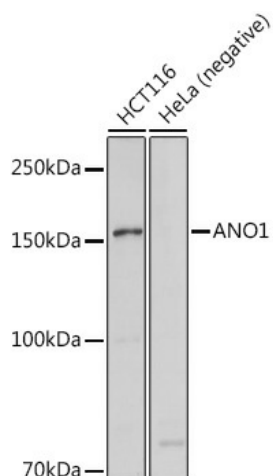
### **TMEM16A (ANO1) Rabbit Polyclonal Antibody**

#### **Product data:**

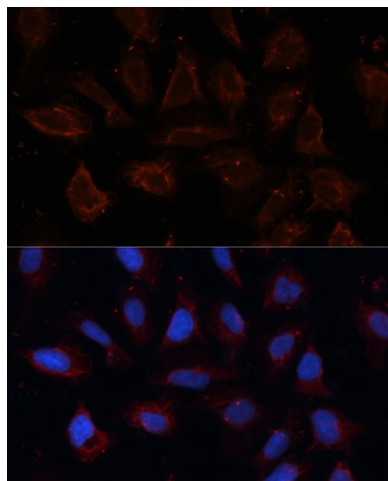
Product Type:	Primary Antibodies
Applications:	ELISA, ICC/IF, WB
Recommended Dilution:	WB, 1:1000 - 1:2000 IF/ICC, 1:100 - 1:200 ELISA, Recommended starting concentration is 1 µg/mL. Please optimize the concentration based on your specific assay requirements.
Reactivity:	Human, Mouse
Modifications:	Unmodified
Host:	Rabbit
Isotype:	IgG
Clonality:	Polyclonal
Formulation:	Buffer: PBS with 0.02% sodium azide, 50% glycerol, pH 7.3.
Concentration:	lot specific
Purification:	Affinity purification
Conjugation:	Unconjugated
Storage:	Store at -20°C. Avoid freeze / thaw cycles.
Stability:	Shelf life: one year from despatch.
Predicted Protein Size:	114kDa
Gene Name:	anoctamin 1
Database Link:	<a href="#">Entrez Gene 55107 Human Q5XXA6</a>
Background:	Enables calcium activated cation channel activity; intracellular calcium activated chloride channel activity; and iodide transmembrane transporter activity. Involved in cation transport; inorganic anion transport; and positive regulation of insulin secretion involved in cellular response to glucose stimulus. Located in apical plasma membrane and nucleoplasm.
Synonyms:	DOG1; FLJ10261; ORAOV2; TAOS2; TMEM16A


[View online »](#)

## Product images:



Western blot analysis of various lysates using ANO1 Rabbit pAb ([TA373530]) at 1:1000 dilution. Secondary antibody: HRP-conjugated Goat anti-Rabbit IgG (H+L) (AS014) at 1:10000 dilution. Lysates/proteins: 25µg per lane. Blocking buffer: 3% nonfat dry milk in TBST. Detection: ECL Basic Kit (RM00020). Exposure time: 1s.



Immunofluorescence analysis of U2OS cells using ANO1 Rabbit pAb ([TA373530]) at dilution of 1:100. Secondary antibody: Cy3-conjugated Goat anti-Rabbit IgG (H+L) (AS007) at 1:500 dilution. Blue: DAPI for nuclear staining.