

Product datasheet for **TA373510S**

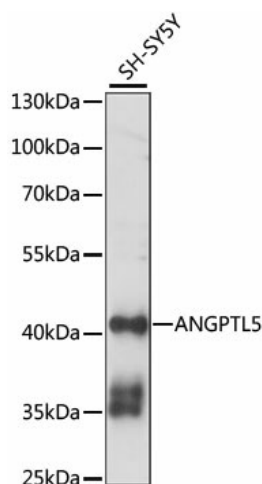
ANGPTL5 Rabbit Polyclonal Antibody

Product data:

Product Type:	Primary Antibodies
Applications:	ELISA, WB
Recommended Dilution:	WB, 1:500 - 1:2000 ELISA, Recommended starting concentration is 1 µg/mL. Please optimize the concentration based on your specific assay requirements.
Reactivity:	Human
Modifications:	Unmodified
Host:	Rabbit
Isotype:	IgG
Clonality:	Polyclonal
Formulation:	Buffer: PBS with 0.02% sodium azide, 50% glycerol, pH 7.3.
Concentration:	lot specific
Purification:	Affinity purification
Conjugation:	Unconjugated
Storage:	Store at -20°C. Avoid freeze / thaw cycles.
Stability:	Shelf life: one year from despatch.
Predicted Protein Size:	44kDa
Gene Name:	angiopoietin like 5
Database Link:	Entrez Gene 253935 Human Q86XS5
Background:	Predicted to be active in collagen-containing extracellular matrix and extracellular space.
Synonyms:	fibrinogen-like



[View online »](#)

Product images:

Western blot analysis of lysates from SH-SY5Y cells