

Product datasheet for **TA373505**

Apc7 (ANAPC7) Rabbit Polyclonal Antibody

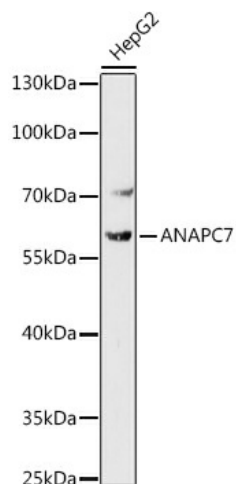
Product data:

Product Type:	Primary Antibodies
Applications:	WB
Recommended Dilution:	WB,1:500 - 1:2000
Reactivity:	Human, Mouse
Host:	Rabbit
Isotype:	IgG
Clonality:	Polyclonal
Immunogen:	A synthetic peptide of human ANAPC7.
Formulation:	Buffer: PBS with 0.02% sodium azide,50% glycerol,pH7.3.
Concentration:	lot specific
Purification:	Affinity purification
Conjugation:	Unconjugated
Storage:	Store at -20°C. Avoid freeze / thaw cycles.
Stability:	Shelf life: one year from despatch.
Gene Name:	anaphase promoting complex subunit 7
Database Link:	Entrez Gene 51434 Human Q9UJX3
Background:	This gene encodes a tetratricopeptide repeat containing component of the anaphase promoting complex/cyclosome (APC/C), a large E3 ubiquitin ligase that controls cell cycle progression by targeting a number of cell cycle regulators such as B-type cyclins for 26S proteasome-mediated degradation through ubiquitination. The encoded protein is required for proper protein ubiquitination function of APC/C and for the interaction of APC/C with certain transcription coactivators. Multiple transcript variants encoding different isoforms have been found for this gene. [provided by RefSeq, Nov 2008]
Synonyms:	APC7



[View online »](#)

Product images:



Western blot analysis of extracts of HepG2 cells, using ANAPC7 antibody (TA373505) at 1:1000 dilution. | Secondary antibody: HRP Goat Anti-Rabbit IgG (H+L) at 1:10000 dilution. | Lysates/proteins: 25ug per lane. | Blocking buffer: 3% nonfat dry milk in TBST. | Detection: ECL Basic Kit . | Exposure time: 180s.