

Product datasheet for **TA373501S**

Apc11 (ANAPC11) Rabbit Polyclonal Antibody

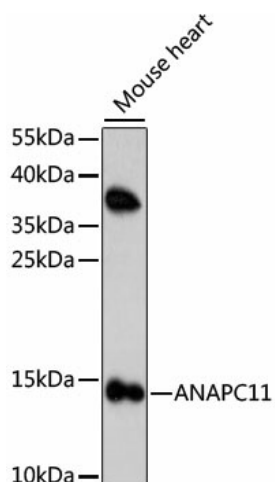
Product data:

Product Type:	Primary Antibodies
Applications:	ELISA, ICC/IF, IHC, WB
Recommended Dilution:	WB, 1:200 - 1:2000 IHC-P, 1:50 - 1:200 IF/ICC, 1:50 - 1:200 ELISA, Recommended starting concentration is 1 µg/mL. Please optimize the concentration based on your specific assay requirements.
Reactivity:	Human, Mouse
Modifications:	Unmodified
Host:	Rabbit
Isotype:	IgG
Clonality:	Polyclonal
Formulation:	Buffer: PBS with 0.02% sodium azide, 50% glycerol, pH 7.3.
Concentration:	lot specific
Purification:	Affinity purification
Conjugation:	Unconjugated
Storage:	Store at -20°C. Avoid freeze / thaw cycles.
Stability:	Shelf life: one year from despatch.
Predicted Protein Size:	10kDa
Gene Name:	anaphase promoting complex subunit 11
Database Link:	Entrez Gene 51529 Human Q9NYG5
Background:	Enables cullin family protein binding activity and ubiquitin-ubiquitin ligase activity. Contributes to ubiquitin-protein transferase activity. Involved in protein K11-linked ubiquitination. Located in nucleolus and nucleoplasm. Part of anaphase-promoting complex.
Synonyms:	APC11; Apc11p; HSPC214; MGC882

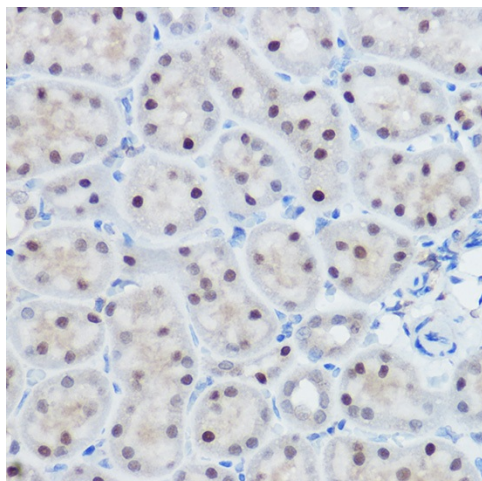


[View online »](#)

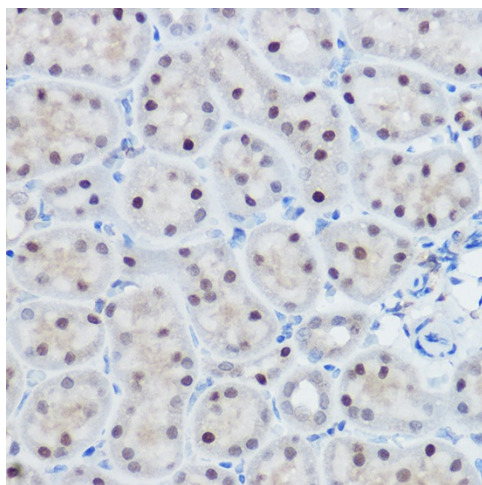
Product images:



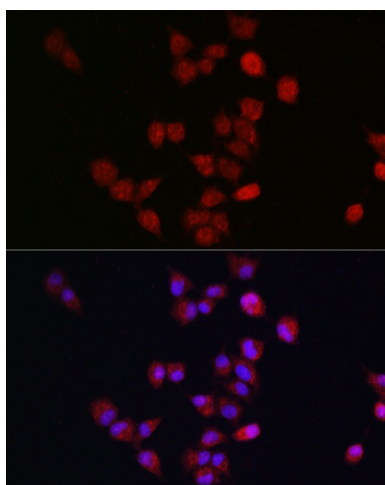
Western blot analysis of lysates from mouse heart



Immunohistochemistry analysis of paraffin-embedded Human liver cancer using ANAPC11 Rabbit pAb ([TA373501]) at dilution of 1:100 (40x lens). High pressure antigen retrieval performed with 0.01M Citrate Bufferr (pH 6.0) prior to IHC staining.



Immunohistochemistry analysis of paraffin-embedded Mouse kidney using ANAPC11 Rabbit pAb ([TA373501]) at dilution of 1:100 (40x lens). High pressure antigen retrieval performed with 0.01M Citrate Bufferr (pH 6.0) prior to IHC staining.



Immunofluorescence analysis of A-549 cells using ANAPC11 Rabbit pAb ([TA373501]) at dilution of 1:300. Secondary antibody: Cy3-conjugated Goat anti-Rabbit IgG (H+L) (AS007) at 1:500 dilution. Blue: DAPI for nuclear staining.