

Product datasheet for **TA373491**

AMOTL2 Rabbit Polyclonal Antibody

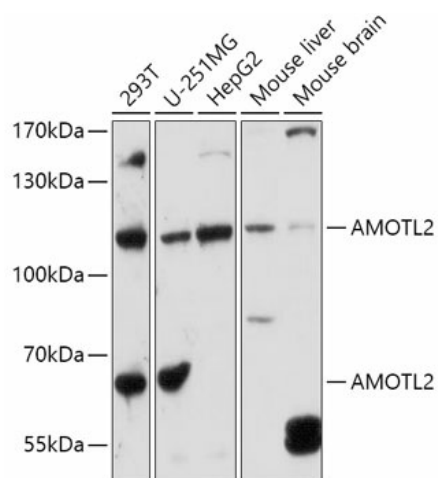
Product data:

Product Type:	Primary Antibodies
Applications:	ICC/IF, IHC, WB
Recommended Dilution:	WB,1:500 - 1:2000 IHC,1:50 - 1:100 IF,1:50 - 1:100
Reactivity:	Human, Mouse
Host:	Rabbit
Isotype:	IgG
Clonality:	Polyclonal
Immunogen:	Recombinant fusion protein containing a sequence corresponding to amino acids 638-837 of human AMOTL2 (NP_001265612.1).
Formulation:	Buffer: PBS with 0.02% sodium azide,50% glycerol,pH7.3.
Concentration:	lot specific
Purification:	Affinity purification
Conjugation:	Unconjugated
Storage:	Store at -20°C. Avoid freeze / thaw cycles.
Stability:	Shelf life: one year from despatch.
Predicted Protein Size:	60kDa/86kDa
Gene Name:	angiotenin like 2
Database Link:	Entrez Gene 51421 Human Q9Y2J4
Background:	Angiotenin is a protein that binds angiotenin, a circulating inhibitor of the formation of new blood vessels (angiogenesis). Angiotenin mediates angiotenin inhibition of endothelial cell migration and tube formation in vitro. The protein encoded by this gene is related to angiotenin and is a member of the motin protein family. Alternative splicing results in multiple transcript variants of this gene.
Synonyms:	KIAA0989; LCCP



[View online »](#)

Product images:



Western blot analysis of extracts of various cell lines, using AMOTL2 antibody (TA373491) at 1:1000 dilution. | Secondary antibody: HRP Goat Anti-Rabbit IgG (H+L) at 1:10000 dilution. | Lysates/proteins: 25ug per lane. | Blocking buffer: 3% nonfat dry milk in TBST. | Detection: ECL Basic Kit. | Exposure time: 30s.