

## Product datasheet for **TA373482**

### AMBRA1 Rabbit Polyclonal Antibody

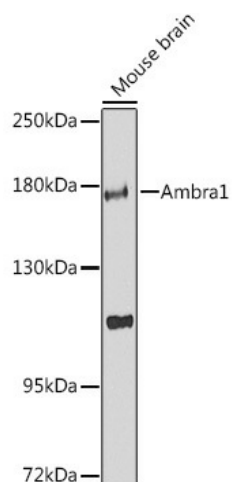
#### Product data:

Product Type:	Primary Antibodies
Applications:	WB
Recommended Dilution:	WB,1:500 - 1:2000
Reactivity:	Mouse
Modifications:	Unmodified
Host:	Rabbit
Isotype:	IgG
Clonality:	Polyclonal
Immunogen:	Recombinant fusion protein containing a sequence corresponding to amino acids 961-1208 of human Ambra1 (NP_060219.2).
Formulation:	Buffer: PBS with 0.02% sodium azide,50% glycerol,pH7.3.
Concentration:	lot specific
Purification:	Affinity purification
Conjugation:	Unconjugated
Storage:	Store at -20°C. Avoid freeze / thaw cycles.
Stability:	Shelf life: one year from despatch.
Predicted Protein Size:	84kDa/132kDa/135kDa/139kDa/142kDa
Gene Name:	autophagy and beclin 1 regulator 1
Database Link:	<a href="#">Q9C0C7</a>
Synonyms:	DCAF3; FLJ20294; KIAA1736; MGC33725; WDR94



[View online »](#)

## Product images:



Western blot analysis of extracts of mouse brain, using Ambra1 Antibody (TA373482) at 1:1000 dilution. Secondary antibody: HRP Goat Anti-Rabbit IgG (H+L) at 1:10000 dilution. Lysates/proteins: 25 $\mu$ g per lane. Blocking buffer: 3% nonfat dry milk in TBST. Detection: ECL Enhanced Kit. Exposure time: 90s.