

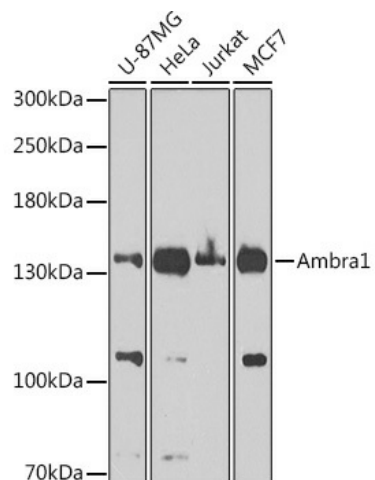
Product datasheet for **TA373481S**

AMBRA1 Rabbit Polyclonal Antibody

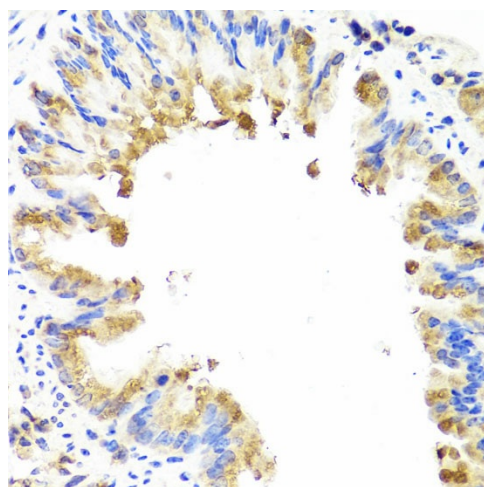
Product data:

Product Type:	Primary Antibodies
Applications:	ELISA, ICC/IF, IHC, WB
Recommended Dilution:	WB, 1:500 - 1:1000 IHC-P, 1:50 - 1:200 IF/ICC, 1:50 - 1:200 ELISA, Recommended starting concentration is 1 µg/mL. Please optimize the concentration based on your specific assay requirements.
Reactivity:	Human, Mouse, Rat
Modifications:	Unmodified
Host:	Rabbit
Isotype:	IgG
Clonality:	Polyclonal
Formulation:	Buffer: PBS with 0.02% sodium azide, 50% glycerol, pH 7.3.
Concentration:	lot specific
Purification:	Affinity purification
Conjugation:	Unconjugated
Storage:	Store at -20°C. Avoid freeze / thaw cycles.
Stability:	Shelf life: one year from despatch.
Predicted Protein Size:	143kDa
Gene Name:	autophagy and beclin 1 regulator 1
Database Link:	Entrez Gene 55626 Human Q9C0C7
Background:	Enables GTPase binding activity and ubiquitin protein ligase binding activity. Involved in macroautophagy; positive regulation of phosphatidylinositol 3-kinase activity; and response to mitochondrial depolarisation. Located in cytosol. Colocalizes with mitochondrion. Biomarker of multiple system atrophy.
Synonyms:	DCAF3; FLJ20294; KIAA1736; MGC33725; WDR94

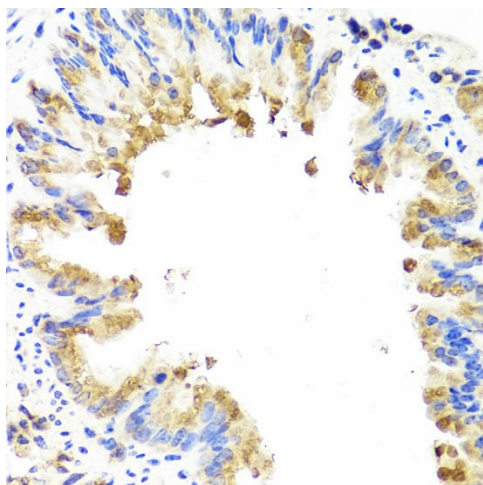

[View online »](#)

Product images:


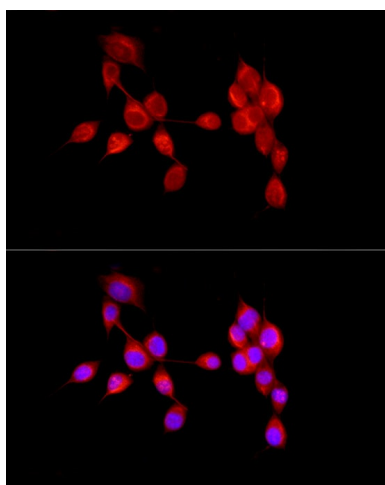
Western blot analysis of lysates from PANC-1 cells



Immunohistochemistry analysis of paraffin-embedded Rat lung using Ambra1 Rabbit pAb ([TA373481]) at dilution of 1:100 (40x lens). Microwave antigen retrieval performed with 0.01M PBS Buffer (pH 7.2) prior to IHC staining.



Immunohistochemistry analysis of paraffin-embedded Mouse lung using Ambra1 Rabbit pAb ([TA373481]) at dilution of 1:100 (40x lens). Microwave antigen retrieval performed with 0.01M PBS Buffer (pH 7.2) prior to IHC staining.



Immunofluorescence analysis of NIH/3T3 cells using Ambra1 Rabbit pAb ([TA373481]) at dilution of 1:50 (40x lens). Secondary antibody: Cy3-conjugated Goat anti-Rabbit IgG (H+L) (AS007) at 1:500 dilution. Blue: DAPI for nuclear staining.