

## Product datasheet for **TA373480**

### Aly (ALYREF) Rabbit Polyclonal Antibody

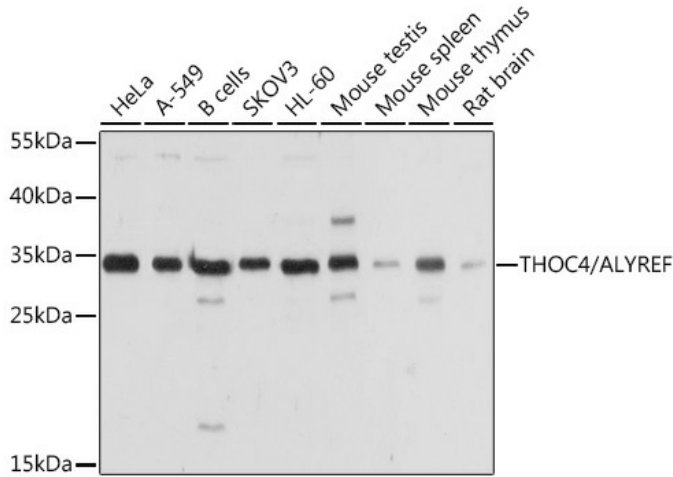
#### Product data:

Product Type:	Primary Antibodies
Applications:	ICC/IF, IHC, WB
Recommended Dilution:	WB,1:500 - 1:2000 IHC,1:50 - 1:200 IF,1:50 - 1:200
Reactivity:	Human, Mouse, Rat
Modifications:	Unmodified
Host:	Rabbit
Isotype:	IgG
Clonality:	Polyclonal
Immunogen:	Recombinant protein of human THOC4/THOC4/ALYREF
Formulation:	Buffer: PBS with 0.02% sodium azide,50% glycerol,pH7.3.
Concentration:	lot specific
Purification:	Affinity purification
Conjugation:	Unconjugated
Storage:	Store at -20°C. Avoid freeze / thaw cycles.
Stability:	Shelf life: one year from despatch.
Predicted Protein Size:	26kDa
Gene Name:	Aly/REF export factor
Database Link:	<a href="#">Entrez Gene 10189 Human Q86V81</a>
Background:	The protein encoded by this gene is a heat stable, nuclear protein and functions as a molecular chaperone. It is thought to regulate dimerization, DNA binding, and transcriptional activity of basic region-leucine zipper (bZIP) proteins.
Synonyms:	ALY; REF1; Refbp1; Thoc4

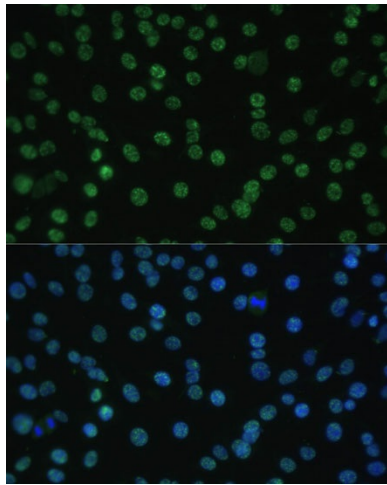


[View online »](#)

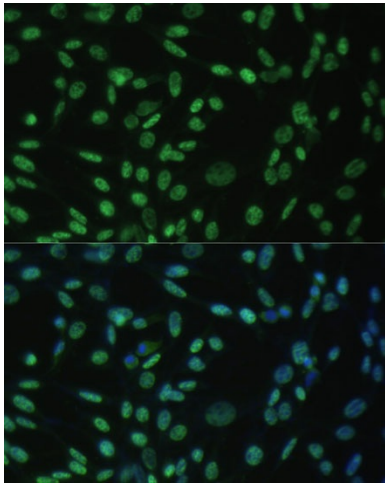
**Product images:**



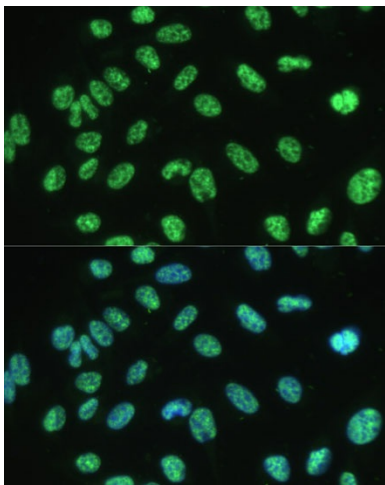
Western blot analysis of extracts of various cell lines, using THOC4/THOC4/ALYREF antibody (TA373480) at 1:1000 dilution. |Secondary antibody: HRP Goat Anti-Rabbit IgG (H+L) at 1:10000 dilution. |Lysates/proteins: 25ug per lane. |Blocking buffer: 3% nonfat dry milk in TBST. |Detection: ECL Basic Kit . |Exposure time: 5s.



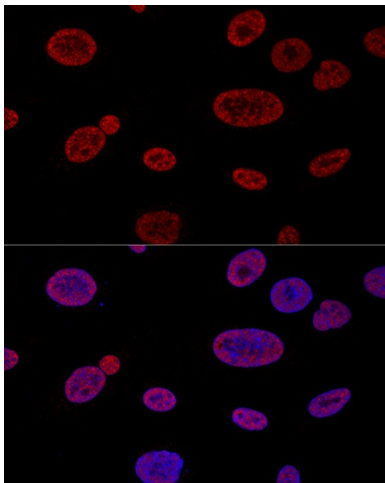
Immunofluorescence analysis of C6 cells using THOC4/THOC4/ALYREF Polyclonal Antibody (TA373480) at dilution of 1:100 (40x lens). Blue: DAPI for nuclear staining.



Immunofluorescence analysis of NIH-3T3 cells using THOC4/THOC4/ALYREF Polyclonal Antibody (TA373480) at dilution of 1:100 (40x lens). Blue: DAPI for nuclear staining.



Immunofluorescence analysis of U-2 OS cells using THOC4/THOC4/ALYREF Polyclonal Antibody (TA373480) at dilution of 1:100 (40x lens). Blue: DAPI for nuclear staining.



Confocal immunofluorescence analysis of U2OS cells using THOC4/THOC4/ALYREF Polyclonal Antibody (TA373480) at dilution of 1:100. Blue: DAPI for nuclear staining.