

Product datasheet for **TA373475**

Alkaline Phosphatase (ALPP) Rabbit Polyclonal Antibody

Product data:

Product Type:	Primary Antibodies
Applications:	IHC, IP, WB
Recommended Dilution:	WB,1:500 - 1:2000 IHC,1:50 - 1:200 IP,1:50 - 1:100
Reactivity:	Human
Modifications:	Unmodified
Host:	Rabbit
Isotype:	IgG
Clonality:	Polyclonal
Immunogen:	Recombinant fusion protein containing a sequence corresponding to amino acids 260-460 of human Placental alkaline phosphatase (PLAP) (NP_001623.3).
Formulation:	Buffer: PBS with 0.02% sodium azide,50% glycerol,pH7.3.
Concentration:	lot specific
Purification:	Affinity purification
Conjugation:	Unconjugated
Storage:	Store at -20°C. Avoid freeze / thaw cycles.
Stability:	Shelf life: one year from despatch.
Predicted Protein Size:	57kDa
Gene Name:	alkaline phosphatase, placental
Database Link:	Entrez Gene 250 Human P05187



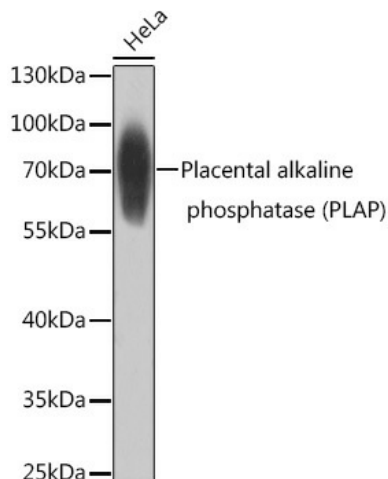
[View online »](#)

Background:

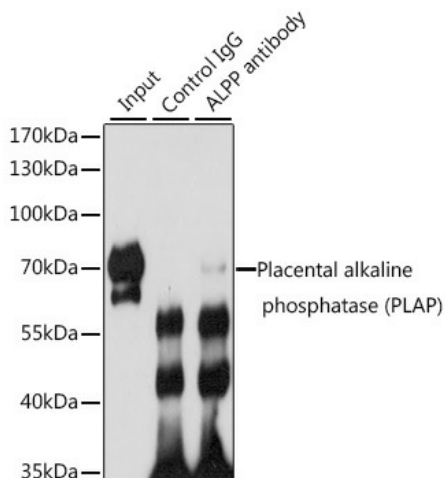
The protein encoded by this gene is an alkaline phosphatase, a metalloenzyme that catalyzes the hydrolysis of phosphoric acid monoesters. It belongs to a multigene family composed of four alkaline phosphatase isoenzymes. The enzyme functions as a homodimer and has a catalytic site containing one magnesium and two zinc ions, which are required for its enzymatic function. The protein is primarily expressed in placental and endometrial tissue; however, strong ectopic expression has been detected in ovarian adenocarcinoma, serous cystadenocarcinoma, and other ovarian cancer cells.

Synonyms:

ALP; FLJ61142; glycerophosphatase; PALP; PLAP; PLAP-1

Product images:


Western blot analysis of extracts of HeLa cells, using Placental alkaline phosphatase (PLAP) antibody (TA373475) at 1:1000 dilution. | Secondary antibody: HRP Goat Anti-Rabbit IgG (H+L) at 1:10000 dilution. | Lysates/proteins: 25ug per lane. | Blocking buffer: 3% nonfat dry milk in TBST. | Detection: ECL Basic Kit . | Exposure time: 1s.



Immunoprecipitation analysis of 200ug extracts of HeLa cells, using 3 ug Placental alkaline phosphatase (PLAP) antibody (TA373475). Western blot was performed from the immunoprecipitate using Placental alkaline phosphatase (PLAP) antibody (TA373475) at a dilution of 1:1000.