

## Product datasheet for **TA373456**

### ALG5 Rabbit Polyclonal Antibody

#### Product data:

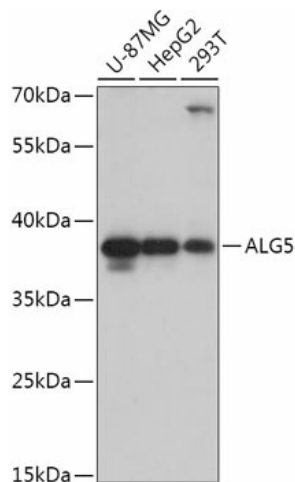
Product Type:	Primary Antibodies
Applications:	ICC/IF, IHC, WB
Recommended Dilution:	WB,1:500 - 1:2000 IHC,1:50 - 1:200 IF,1:50 - 1:200
Reactivity:	Human, Mouse, Rat
Modifications:	Unmodified
Host:	Rabbit
Isotype:	IgG
Clonality:	Polyclonal
Immunogen:	Recombinant fusion protein containing a sequence corresponding to amino acids 34-190 of human ALG5 (NP_037470.1).
Formulation:	Buffer: PBS with 0.02% sodium azide,50% glycerol,pH7.3.
Concentration:	lot specific
Purification:	Affinity purification
Conjugation:	Unconjugated
Storage:	Store at -20°C. Avoid freeze / thaw cycles.
Stability:	Shelf life: one year from despatch.
Predicted Protein Size:	33kDa/36kDa
Gene Name:	ALG5, dolichyl-phosphate beta-glucosyltransferase
Database Link:	<a href="#">Entrez Gene 29880 Human Q9Y673</a>
Background:	This gene encodes a member of the glycosyltransferase 2 family. The encoded protein participates in glycosylation of the oligomannose core in N-linked glycosylation of proteins. The addition of glucose residues to the oligomannose core is necessary to ensure substrate recognition, and therefore, effectual transfer of the oligomannose core to the nascent glycoproteins. Multiple transcript variants encoding different isoforms have been found for this gene. [provided by RefSeq, Nov 2008]



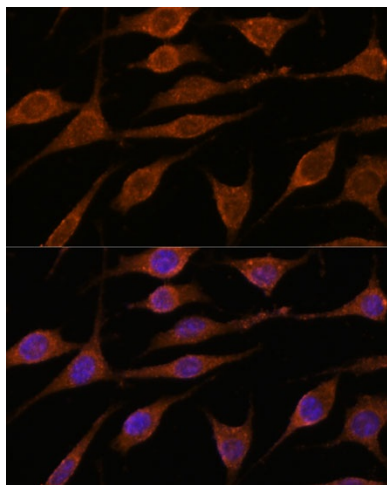
[View online »](#)

Synonyms: bA421P11.2; DolP-glucosyltransferase; RP11-421P11.2

### Product images:



Western blot analysis of extracts of various cell lines, using ALG5 antibody (TA373456) at 1:1000 dilution. | Secondary antibody: HRP Goat Anti-Rabbit IgG (H+L) at 1:10000 dilution. | Lysates/proteins: 25ug per lane. | Blocking buffer: 3% nonfat dry milk in TBST. | Detection: ECL Basic Kit . | Exposure time: 90s.



Immunofluorescence analysis of L929 cells using ALG5 antibody (TA373456) at dilution of 1:100. Blue: DAPI for nuclear staining.