

## Product datasheet for **TA373455**

### ALG2 Rabbit Polyclonal Antibody

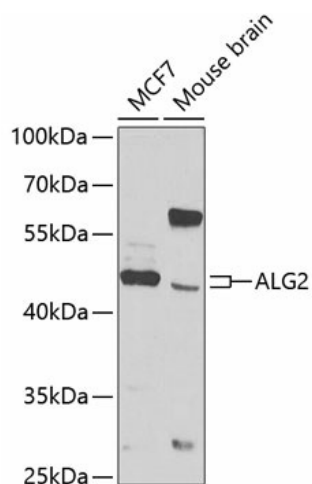
#### Product data:

|                         |   |
|-------------------------|---|
| Product Type:           | Primary Antibodies  |
| Applications:           | WB  |
| Recommended Dilution:   | WB, 1:500 - 1:2000  |
| Reactivity:             | Human, Mouse  |
| Modifications:          | Unmodified  |
| Host:                   | Rabbit  |
| Isotype:                | IgG   |
| Clonality:              | Polyclonal  |
| Immunogen:              | Recombinant fusion protein containing a sequence corresponding to amino acids 197-416 of human ALG2 (NP_149078.1).  |
| Formulation:            | Buffer: PBS with 0.02% sodium azide, 50% glycerol, pH 7.3.  |
| Concentration:          | lot specific  |
| Purification:           | Affinity purification   |
| Conjugation:            | Unconjugated  |
| Storage:                | Store at -20°C. Avoid freeze / thaw cycles.   |
| Stability:              | Shelf life: one year from despatch.   |
| Predicted Protein Size: | 37kDa/47kDa   |
| Gene Name:              | ALG2, alpha-1,3/1,6-mannosyltransferase   |
| Database Link:          | <a href="#">Entrez Gene 85365 Human Q9H553</a>  |
| Background:             | This gene encodes a member of the glycosyltransferase 1 family. The encoded protein acts as an alpha 1,3 mannosyltransferase, mannosylating Man(2)GlcNAc(2)-dolichol diphosphate and Man(1)GlcNAc(2)-dolichol diphosphate to form Man(3)GlcNAc(2)-dolichol diphosphate. Defects in this gene have been associated with congenital disorder of glycosylation type 1h (CDG-Ih). Alternative splicing results in multiple transcript variants. |
| Synonyms:               | CDGII; FLJ14511; hALPG2; NET38  |



[View online »](#)

## Product images:



Western blot analysis of extracts of various cell lines, using ALG2 antibody (TA373455) at 1:1000 dilution. Secondary antibody: HRP Goat Anti-Rabbit IgG (H+L) at 1:10000 dilution. Lysates/proteins: 25ug per lane. Blocking buffer: 3% nonfat dry milk in TBST. Detection: ECL Basic Kit. Exposure time: 90s.