

Product datasheet for **TA373451S**

Aldolase C (ALDOC) Rabbit Polyclonal Antibody

Product data:

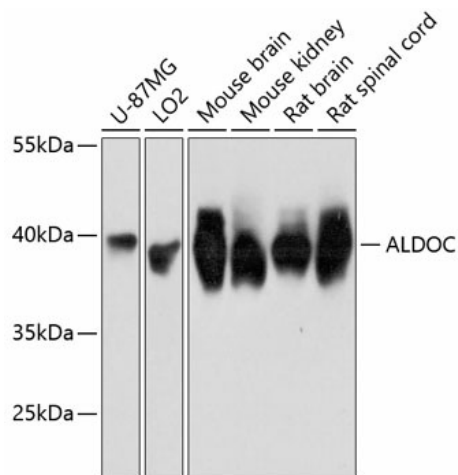
Product Type:	Primary Antibodies
Applications:	ICC/IF, IHC, WB
Recommended Dilution:	WB,1:500 - 1:2000 IHC,1:50 - 1:200 IF,1:50 - 1:200
Reactivity:	Human, Mouse, Rat
Modifications:	Unmodified
Host:	Rabbit
Isotype:	IgG
Clonality:	Polyclonal
Immunogen:	Recombinant fusion protein containing a sequence corresponding to amino acids 1-170 of human ALDOC (NP_005156.1).
Formulation:	Buffer: PBS with 0.02% sodium azide,50% glycerol,pH7.3.
Concentration:	lot specific
Purification:	Affinity purification
Conjugation:	Unconjugated
Storage:	Store at -20°C. Avoid freeze / thaw cycles.
Stability:	Shelf life: one year from despatch.
Predicted Protein Size:	39kDa
Gene Name:	aldolase, fructose-bisphosphate C
Database Link:	Entrez Gene 230 Human P09972
Background:	This gene encodes a member of the class I fructose-biphosphate aldolase gene family. Expressed specifically in the hippocampus and Purkinje cells of the brain, the encoded protein is a glycolytic enzyme that catalyzes the reversible aldol cleavage of fructose-1,6-biphosphate and fructose 1-phosphate to dihydroxyacetone phosphate and either glyceraldehyde-3-phosphate or glyceraldehyde, respectively.



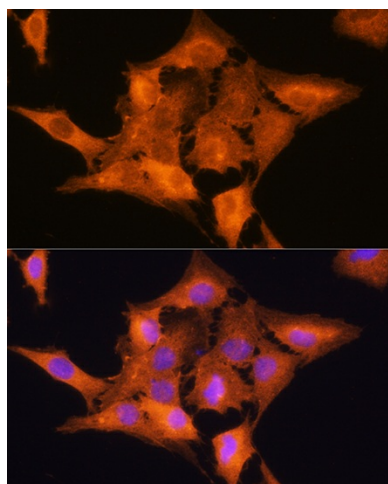
[View online »](#)

Synonyms: ALDC; OTTHUMP00000163437

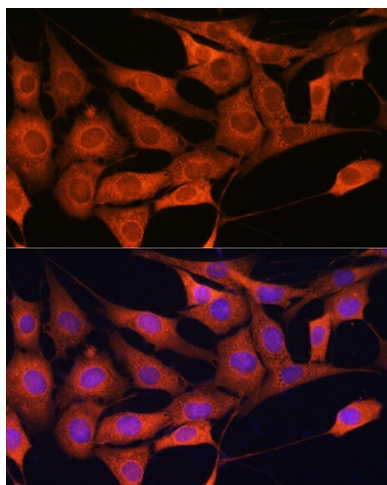
Product images:



Western blot analysis of extracts of various cell lines, using ALDOC Antibody ([TA373451]) at 1:3000 dilution. |Secondary antibody: HRP Goat Anti-Rabbit IgG (H+L) at 1:10000 dilution. |Lysates/proteins: 25ug per lane. |Blocking buffer: 3% nonfat dry milk in TBST. |Detection: ECL Basic Kit . |Exposure time: 3s.



Immunofluorescence analysis of C6 cells using ALDOC Rabbit pAb ([TA373451]) at dilution of 1:100. Blue: DAPI for nuclear staining.



Immunofluorescence analysis of NIH/3T3 cells using ALDOC Rabbit pAb ([TA373451]) at dilution of 1:100. Blue: DAPI for nuclear staining.