

Product datasheet for **TA373430S**

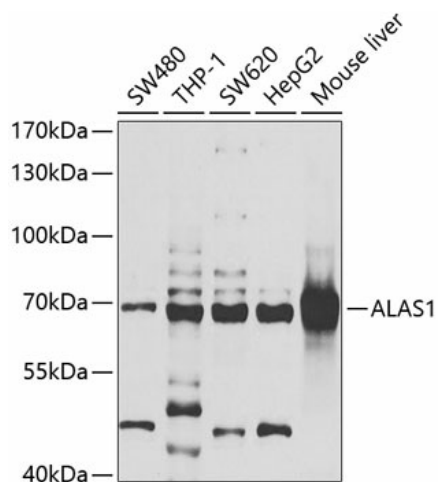
ALAS1 Rabbit Polyclonal Antibody

Product data:

Product Type:	Primary Antibodies
Applications:	ELISA, WB
Recommended Dilution:	WB, 1:500 - 1:2000 ELISA, Recommended starting concentration is 1 µg/mL. Please optimize the concentration based on your specific assay requirements.
Reactivity:	Human, Mouse, Rat
Modifications:	Unmodified
Host:	Rabbit
Isotype:	IgG
Clonality:	Polyclonal
Formulation:	Buffer: PBS with 0.02% sodium azide, 50% glycerol, pH 7.3.
Concentration:	lot specific
Purification:	Affinity purification
Conjugation:	Unconjugated
Storage:	Store at -20°C. Avoid freeze / thaw cycles.
Stability:	Shelf life: one year from despatch.
Predicted Protein Size:	71kDa
Gene Name:	5'-aminolevulinate synthase 1
Database Link:	Entrez Gene 211 Human P13196
Background:	This gene encodes the mitochondrial enzyme which catalyzes the rate-limiting step in heme (iron-protoporphyrin) biosynthesis. The enzyme encoded by this gene is the housekeeping enzyme; a separate gene encodes a form of the enzyme that is specific for erythroid tissue. The level of the mature encoded protein is regulated by heme: high levels of heme down-regulate the mature enzyme in mitochondria while low heme levels up-regulate. A pseudogene of this gene is located on chromosome 12. Alternative splicing results in multiple transcript variants encoding different isoforms.
Synonyms:	ALAS; ALAS-H; ALAS3; ALASH; MIG4



[View online »](#)

Product images:


Western blot analysis of various lysates using ALAS1 Rabbit pAb (TA373430) at 1:1000 dilution. Secondary antibody: HRP-conjugated Goat anti-Rabbit IgG (H+L) (AS014) at 1:10000 dilution. Lysates/proteins: 25µg per lane. Blocking buffer: 3% nonfat dry milk in TBST. Detection: ECL Basic Kit (RM00020). Exposure time: 20s.