

Product datasheet for **TA373422S**

PRAS40 (AKT1S1) Rabbit Polyclonal Antibody

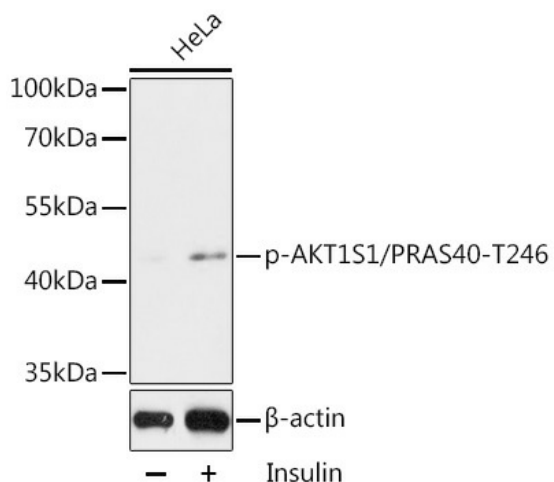
Product data:

Product Type:	Primary Antibodies
Applications:	WB
Recommended Dilution:	WB,1:500 - 1:2000
Reactivity:	Human
Modifications:	Phospho T246
Host:	Rabbit
Isotype:	IgG
Clonality:	Polyclonal
Immunogen:	A synthetic phosphorylated peptide around T246 of human AKT1S1/PRAS40 (NP_001092102.1).
Formulation:	PBS with 0.05% proclin300,50% glycerol,pH7.3.
Concentration:	lot specific
Purification:	Affinity purification
Conjugation:	Unconjugated
Storage:	Store at -20°C. Avoid freeze / thaw cycles.
Stability:	Shelf life: one year from despatch.
Predicted Protein Size:	13kDa/27kDa/29kDa
Gene Name:	AKT1 substrate 1
Database Link:	Entrez Gene 84335 Human Q96B36
Background:	AKT1S1 is a proline-rich substrate of AKT (MIM 164730) that binds 14-3-3 protein (see YWHAH, MIM 113508) when phosphorylated (Kovacina et al., 2003 [PubMed 12524439]). [supplied by OMIM, Mar 2008]
Synonyms:	Lobe; MGC2865; OTTHUMP00000196759; OTTHUMP00000196760; PRAS40



[View online »](#)

Product images:



Western blot analysis of extracts of HeLa cells, using Phospho-AKT1S1/PRAS40-T246 antibody ([TA373422]) at 1:2000 dilution. HeLa cells were treated by Insulin (0.01U/mL) for 15 minutes after serum-starvation overnight. | Secondary antibody: HRP Goat Anti-Rabbit IgG (H+L) at 1:10000 dilution. | Lysates/proteins: 25ug per lane. | Blocking buffer: 3% BSA. | Detection: ECL Basic Kit . | Exposure time: 90s.