

## Product datasheet for **TA373421**

### PRAS40 (AKT1S1) Rabbit Polyclonal Antibody

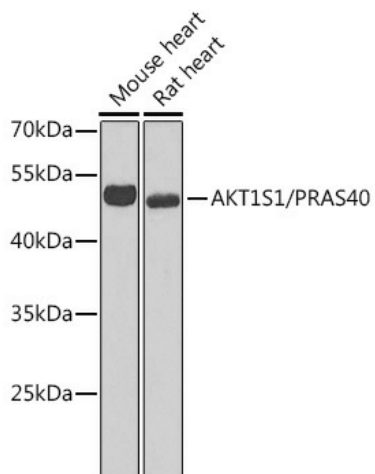
#### Product data:

Product Type:	Primary Antibodies
Applications:	ICC/IF, IHC, WB
Recommended Dilution:	WB,1:500 - 1:2000 IHC,1:50 - 1:100 IF,1:50 - 1:100
Reactivity:	Human, Mouse, Rat
Modifications:	Unmodified
Host:	Rabbit
Isotype:	IgG
Clonality:	Polyclonal
Immunogen:	Recombinant fusion protein containing a sequence corresponding to amino acids 152-276 of human AKT1S1/PRAS40 (NP_115751.3).
Formulation:	Buffer: PBS with 0.02% sodium azide,50% glycerol,pH7.3.
Concentration:	lot specific
Purification:	Affinity purification
Conjugation:	Unconjugated
Storage:	Store at -20°C. Avoid freeze / thaw cycles.
Stability:	Shelf life: one year from despatch.
Predicted Protein Size:	13kDa/27kDa/29kDa
Gene Name:	AKT1 substrate 1
Database Link:	<a href="#">Entrez Gene 84335 Human Q96B36</a>
Background:	AKT1S1 is a proline-rich substrate of AKT (MIM 164730) that binds 14-3-3 protein (see YWHAH, MIM 113508) when phosphorylated (Kovacina et al., 2003 [PubMed 12524439]). [supplied by OMIM, Mar 2008]
Synonyms:	Lobe; MGC2865; OTTHUMP00000196759; OTTHUMP00000196760; PRAS40

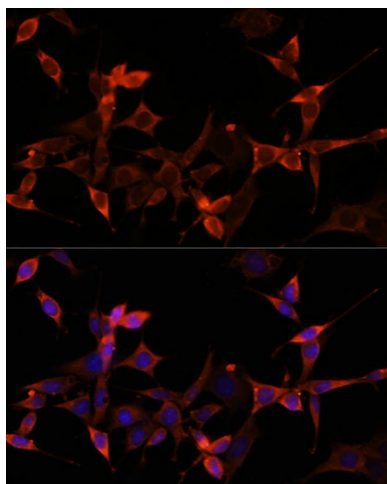


[View online »](#)

## Product images:



Western blot analysis of extracts of various cell lines, using AKT1S1/PRAS40 antibody (TA373421) at 1:1000 dilution. | Secondary antibody: HRP Goat Anti-Rabbit IgG (H+L) at 1:10000 dilution. | Lysates/proteins: 25ug per lane. | Blocking buffer: 3% nonfat dry milk in TBST. | Detection: ECL Enhanced Kit. | Exposure time: 90s.



Immunofluorescence analysis of NIH-3T3 cells using AKT1S1/PRAS40 Polyclonal Antibody (TA373421) at dilution of 1:100 (40x lens). Blue: DAPI for nuclear staining.