

Product datasheet for **TA373386**

AJUBA Rabbit Polyclonal Antibody

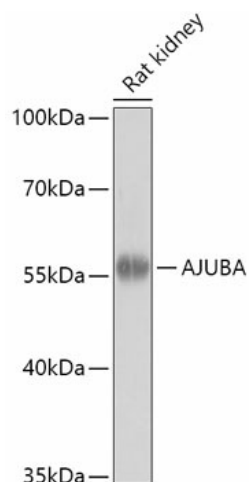
Product data:

Product Type:	Primary Antibodies
Applications:	IHC, WB
Recommended Dilution:	WB,1:500 - 1:2000 IHC,1:50 - 1:200
Reactivity:	Human, Mouse, Rat
Host:	Rabbit
Isotype:	IgG
Clonality:	Polyclonal
Immunogen:	Recombinant Protein of human AJUBA.
Formulation:	Buffer: PBS with 0.02% sodium azide,50% glycerol,pH7.3.
Concentration:	lot specific
Purification:	Affinity purification
Conjugation:	Unconjugated
Storage:	Store at -20°C. Avoid freeze / thaw cycles.
Stability:	Shelf life: one year from despatch.
Predicted Protein Size:	13kDa/56kDa
Gene Name:	ajuba LIM protein
Database Link:	Entrez Gene 84962 Human Q96IF1
Background:	AJUBA (ajuba LIM protein) is a protein-coding gene. GO annotations related to this gene include chromatin binding and actin filament binding. An important paralog of this gene is LPP.
Synonyms:	JUB



[View online »](#)

Product images:



Western blot analysis of extracts of Rat kidney, using AJUBA antibody (TA373386) at 1:1000 dilution. | Secondary antibody: HRP Goat Anti-Rabbit IgG (H+L) at 1:10000 dilution. | Lysates/proteins: 25ug per lane. | Blocking buffer: 3% nonfat dry milk in TBST. | Detection: ECL Enhanced Kit . | Exposure time: 180s.