

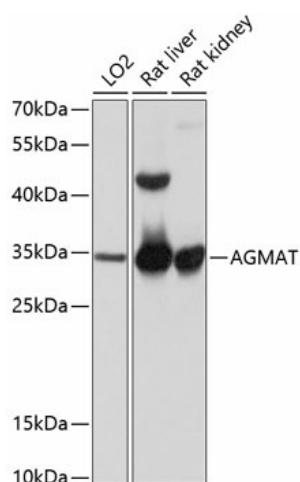
Product datasheet for **TA373348S**

AGMAT Rabbit Polyclonal Antibody

Product data:

Product Type:	Primary Antibodies
Applications:	ELISA, ICC/IF, WB
Recommended Dilution:	WB, 1:500 - 1:2000 IF/ICC, 1:50 - 1:200 ELISA, Recommended starting concentration is 1 µg/mL. Please optimize the concentration based on your specific assay requirements.
Reactivity:	Human, Rat
Modifications:	Unmodified
Host:	Rabbit
Isotype:	IgG
Clonality:	Polyclonal
Formulation:	PBS with 0.05% proclin300, 50% glycerol, pH 7.3.
Concentration:	lot specific
Purification:	Affinity purification
Conjugation:	Unconjugated
Storage:	Store at -20°C. Avoid freeze / thaw cycles.
Stability:	Shelf life: one year from despatch.
Predicted Protein Size:	38kDa
Gene Name:	agmatinase
Database Link:	Entrez Gene 79814 Human Q9BSE5
Background:	Predicted to enable agmatinase activity. Predicted to be involved in putrescine biosynthetic process from arginine, using agmatinase. Predicted to be located in mitochondrion.
Synonyms:	agmatinase; AUH; FLJ23384

[View online »](#)

Product images:


Western blot analysis of various lysates