

Product datasheet for **TA373337S**

AFG3L2 Rabbit Polyclonal Antibody

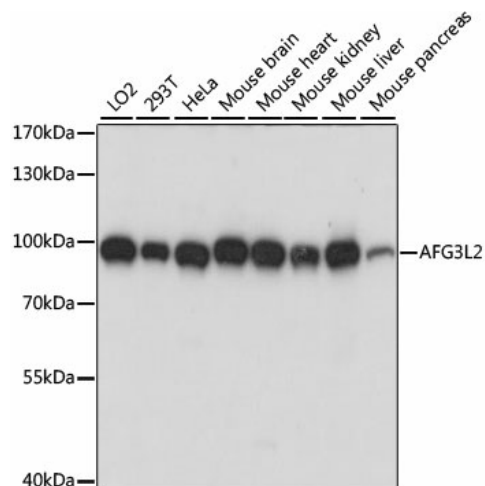
Product data:

Product Type:	Primary Antibodies
Applications:	ELISA, IHC, IP, WB
Recommended Dilution:	WB, 1:500 - 1:1000 IHC-P, 1:50 - 1:200 IP, 0.5µg-4µg antibody for 200µg-400µg extracts of whole cells ELISA, Recommended starting concentration is 1 µg/mL. Please optimize the concentration based on your specific assay requirements.
Reactivity:	Human, Mouse, Rat
Modifications:	Unmodified
Host:	Rabbit
Isotype:	IgG
Clonality:	Polyclonal
Formulation:	PBS with 0.05% proclin300, 50% glycerol, pH7.3.
Concentration:	lot specific
Purification:	Affinity purification
Conjugation:	Unconjugated
Storage:	Store at -20°C. Avoid freeze / thaw cycles.
Stability:	Shelf life: one year from despatch.
Predicted Protein Size:	89kDa
Gene Name:	AFG3 like matrix AAA peptidase subunit 2
Database Link:	Entrez Gene 10939 Human Q9Y4W6
Background:	This gene encodes a protein localized in mitochondria and closely related to paraplegin. The paraplegin gene is responsible for an autosomal recessive form of hereditary spastic paraplegia. This gene is a candidate gene for other hereditary spastic paraplegias or neurodegenerative disorders.
Synonyms:	FLJ25993; SCA28

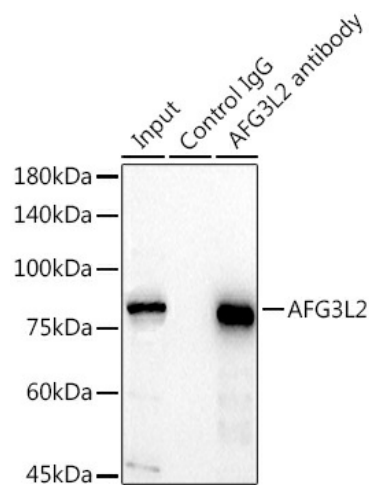


[View online »](#)

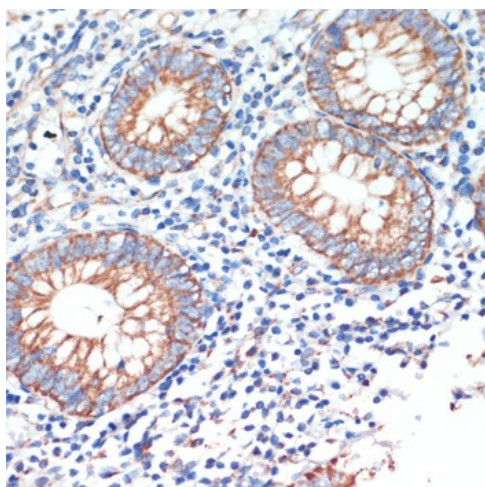
Product images:



Western blot analysis of various lysates



Immunoprecipitation analysis of 300 µg extracts of HeLa cells using 3 µg AFG3L2 antibody ([TA373337]). Western blot was performed from the immunoprecipitate using AFG3L2 antibody ([TA373337]) at a dilution of 1:1000.



Immunohistochemistry analysis of paraffin-embedded Human colon carcinoma using AFG3L2 Rabbit pAb ([TA373337]) at dilution of 1:50 (40x lens). High pressure antigen retrieval performed with 0.01M Citrate Bufferr (pH 6.0) prior to IHC staining.