

## Product datasheet for **TA373332**

### AEBP2 Rabbit Polyclonal Antibody

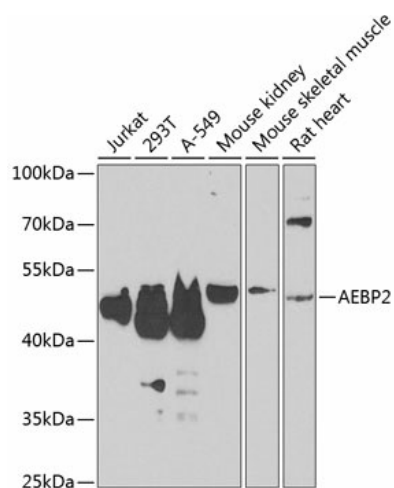
#### Product data:

Product Type:	Primary Antibodies
Applications:	IHC, WB
Recommended Dilution:	WB,1:500 - 1:2000 IHC,1:50 - 1:200
Reactivity:	Human, Mouse, Rat
Modifications:	Unmodified
Host:	Rabbit
Isotype:	IgG
Clonality:	Polyclonal
Immunogen:	Recombinant fusion protein containing a sequence corresponding to amino acids 234-503 of human AEBP2 (NP_694939.2).
Formulation:	Buffer: PBS with 0.02% sodium azide,50% glycerol,pH7.3.
Concentration:	lot specific
Purification:	Affinity purification
Conjugation:	Unconjugated
Storage:	Store at -20°C. Avoid freeze / thaw cycles.
Stability:	Shelf life: one year from despatch.
Predicted Protein Size:	33kDa/52kDa/54kDa
Gene Name:	AE binding protein 2
Database Link:	<a href="#">Entrez Gene 121536 Human Q6ZN18</a>
Background:	Acts as an accessory subunit for the core Polycomb repressive complex 2 (PRC2, which mediates histone H3K27 (H3K27me3 trimethylation on chromatin leading to transcriptional repression of the affected target gene. Plays a role in nucleosome localization of the PRC2 complex.
Synonyms:	MGC17922



[View online »](#)

## Product images:



Western blot analysis of extracts of various cell lines, using AEBP2 antibody (TA373332) at 1:1000 dilution. Secondary antibody: HRP Goat Anti-Rabbit IgG (H+L) at 1:10000 dilution. Lysates/proteins: 25ug per lane. Blocking buffer: 3% nonfat dry milk in TBST. Detection: ECL Enhanced Kit. Exposure time: 90s.