

Product datasheet for **TA373324S**

beta 1 Adrenergic Receptor (ADRB1) Rabbit Polyclonal Antibody

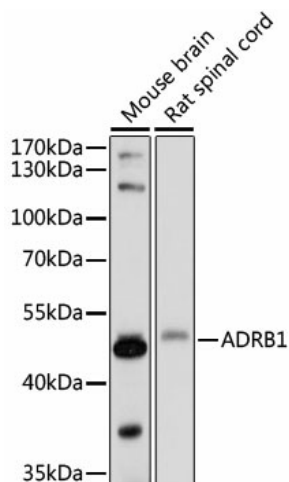
Product data:

| | |
|-------------------------|--|
| Product Type: | Primary Antibodies |
| Applications: | ELISA, ICC/IF, WB |
| Recommended Dilution: | WB, 1:500 - 1:2000 IF/ICC, 1:50 - 1:200 ELISA, Recommended starting concentration is 1 µg/mL. Please optimize the concentration based on your specific assay requirements. |
| Reactivity: | Mouse, Rat |
| Modifications: | Unmodified |
| Host: | Rabbit |
| Isotype: | IgG |
| Clonality: | Polyclonal |
| Formulation: | Buffer: PBS with 0.02% sodium azide, 50% glycerol, pH 7.3. |
| Concentration: | lot specific |
| Purification: | Affinity purification |
| Conjugation: | Unconjugated |
| Storage: | Store at -20°C. Avoid freeze / thaw cycles. |
| Stability: | Shelf life: one year from despatch. |
| Predicted Protein Size: | 51kDa |
| Gene Name: | adrenoceptor beta 1 |
| Database Link: | P08588 |
| Background: | The adrenergic receptors (subtypes alpha 1, alpha 2, beta 1, and beta 2) are a prototypic family of guanine nucleotide binding regulatory protein-coupled receptors that mediate the physiological effects of the hormone epinephrine and the neurotransmitter norepinephrine. Beta-1 adrenoceptors are predominately located in the heart. Specific polymorphisms in this gene have been shown to affect the resting heart rate and can be involved in heart failure. |
| Synonyms: | ADRB1R; B1AR; BETA1AR; RHR |



[View online »](#)

Product images:



Western blot analysis of various lysates using ADRB1 Rabbit pAb ([TA373324]) at 1:1000 dilution.

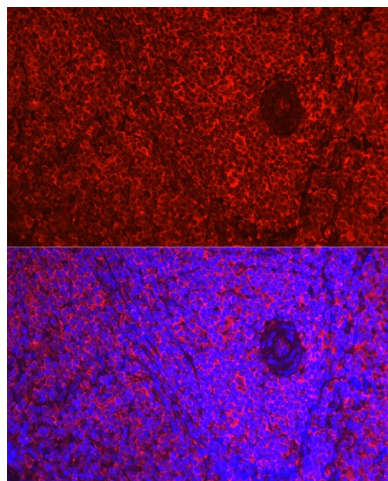
Secondary antibody: HRP-conjugated Goat anti-Rabbit IgG (H+L) (AS014) at 1:10000 dilution.

Lysates/proteins: 25µg per lane.

Blocking buffer: 3% nonfat dry milk in TBST.

Detection: ECL Basic Kit (RM00020).

Exposure time: 1s.



Immunofluorescence analysis of paraffin-embedded Rat spleen using ADRB1 Rabbit pAb ([TA373324]) at dilution of 1:50 (40x lens).

Secondary antibody: Cy3-conjugated Goat anti-Rabbit IgG (H+L) (AS007) at 1:500 dilution. Blue: DAPI for nuclear staining.