

Product datasheet for **TA373316S**

ADPRM Rabbit Polyclonal Antibody

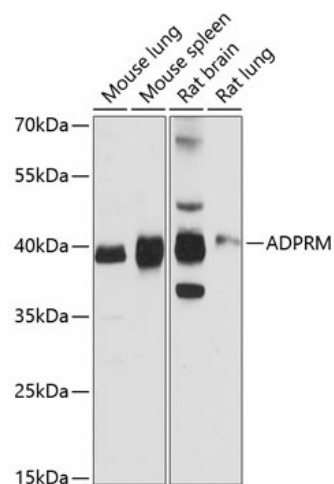
Product data:

Product Type:	Primary Antibodies
Applications:	ELISA, WB
Recommended Dilution:	WB, 1:500 - 1:2000 ELISA, Recommended starting concentration is 1 µg/mL. Please optimize the concentration based on your specific assay requirements.
Reactivity:	Mouse, Rat
Modifications:	Unmodified
Host:	Rabbit
Isotype:	IgG
Clonality:	Polyclonal
Formulation:	Buffer: PBS with 0.02% sodium azide, 50% glycerol, pH 7.3.
Concentration:	lot specific
Purification:	Affinity purification
Conjugation:	Unconjugated
Storage:	Store at -20°C. Avoid freeze / thaw cycles.
Stability:	Shelf life: one year from despatch.
Predicted Protein Size:	40kDa
Gene Name:	ADP-ribose/CDP-alcohol diphosphatase, manganese dependent
Database Link:	Q3LIE5
Background:	Predicted to enable 2',3'-cyclic-nucleotide 2'-phosphodiesterase activity; manganese ion binding activity; and pyrophosphatase activity. Predicted to be located in cytosol.
Synonyms:	2310004I24Rik; ADPRibase-Mn; MDS006; RGD1309906; RP23-67J22.7



[View online »](#)

Product images:



Western blot analysis of various lysates using ADPRM Rabbit pAb (TA373316) at 1:3000 dilution.

Secondary antibody: HRP-conjugated Goat anti-Rabbit IgG (H+L) (AS014) at 1:10000 dilution.

Lysates/proteins: 25µg per lane.

Blocking buffer: 3% nonfat dry milk in TBST.

Detection: ECL Basic Kit (RM00020).

Exposure time: 10s.