

Product datasheet for **TA373314**

ADPRH Rabbit Polyclonal Antibody

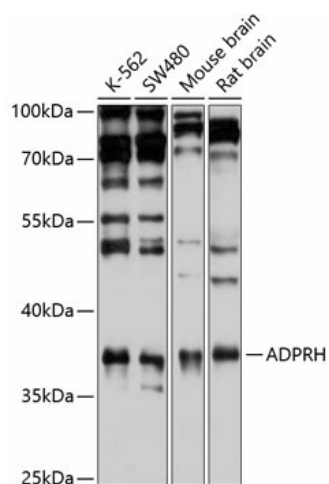
Product data:

Product Type:	Primary Antibodies
Applications:	WB
Recommended Dilution:	WB,1:500 - 1:2000
Reactivity:	Human, Mouse, Rat
Modifications:	Unmodified
Host:	Rabbit
Isotype:	IgG
Clonality:	Polyclonal
Immunogen:	Recombinant fusion protein containing a sequence corresponding to amino acids 180-270 of human ADPRH (NP_001116.1).
Formulation:	Buffer: PBS with 0.02% sodium azide,50% glycerol,pH7.3.
Concentration:	lot specific
Purification:	Affinity purification
Conjugation:	Unconjugated
Storage:	Store at -20°C. Avoid freeze / thaw cycles.
Stability:	Shelf life: one year from despatch.
Predicted Protein Size:	39kDa
Gene Name:	ADP-ribosylarginine hydrolase
Database Link:	Entrez Gene 141 Human P54922
Background:	The enzyme encoded by this gene catalyzes removal of mono-ADP-ribose from arginine residues of proteins in the ADP-ribosylation cycle. Unlike the rat and mouse enzymes that require DTT for maximal activity, the human enzyme is DTT-independent. Alternatively spliced transcript variants that encode different protein isoforms have been described.
Synonyms:	ARH1



[View online »](#)

Product images:



Western blot analysis of extracts of various cell lines, using ADPRH antibody (TA373314) at 1:1000 dilution. | Secondary antibody: HRP Goat Anti-Rabbit IgG (H+L) at 1:10000 dilution. | Lysates/proteins: 25ug per lane. | Blocking buffer: 3% nonfat dry milk in TBST. | Detection: ECL Basic Kit . | Exposure time: 15s.