

Product datasheet for **TA373312**

Adenosine A2b Receptor (ADORA2B) Rabbit Polyclonal Antibody

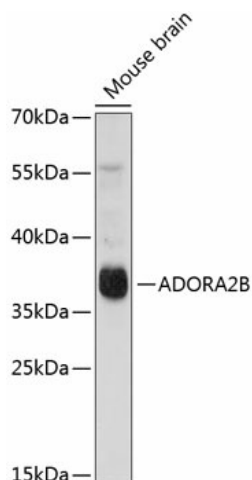
Product data:

Product Type:	Primary Antibodies
Applications:	ICC/IF, WB
Recommended Dilution:	WB,1:500 - 1:2000 IF,1:50 - 1:200
Reactivity:	Rat, Human
Modifications:	Unmodified
Host:	Rabbit
Isotype:	IgG
Clonality:	Polyclonal
Immunogen:	A synthetic peptide corresponding to a sequence within amino acids 100-200 of human ADORA2B (NP_000667.1).
Formulation:	Buffer: PBS with 0.02% sodium azide,50% glycerol,pH7.3.
Concentration:	lot specific
Purification:	Affinity purification
Conjugation:	Unconjugated
Storage:	Store at -20°C. Avoid freeze / thaw cycles.
Stability:	Shelf life: one year from despatch.
Predicted Protein Size:	36kDa
Gene Name:	adenosine A2b receptor
Database Link:	Entrez Gene 136 Human P29275
Background:	This gene encodes an adenosine receptor that is a member of the G protein-coupled receptor superfamily. This integral membrane protein stimulates adenylate cyclase activity in the presence of adenosine. This protein also interacts with netrin-1, which is involved in axon elongation. The gene is located near the Smith-Magenis syndrome region on chromosome 17.
Synonyms:	ADORA2

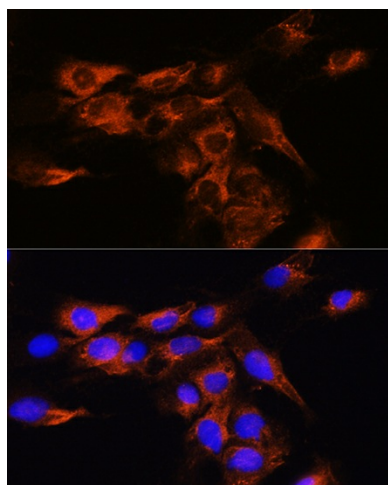


[View online »](#)

Product images:



Western blot analysis of extracts of mouse brain, using ADORA2B antibody (TA373312) at 1:1000 dilution. | Secondary antibody: HRP Goat Anti-Rabbit IgG (H+L) at 1:10000 dilution. | Lysates/proteins: 25ug per lane. | Blocking buffer: 3% nonfat dry milk in TBST. | Detection: ECL Enhanced Kit. | Exposure time: 30s.



Immunofluorescence analysis of C6 cells using ADORA2B Rabbit pAb (TA373312) at dilution of 1:100. Blue: DAPI for nuclear staining.