

Product datasheet for **TA373296**

Alcohol Dehydrogenase (ADH1A) Rabbit Polyclonal Antibody

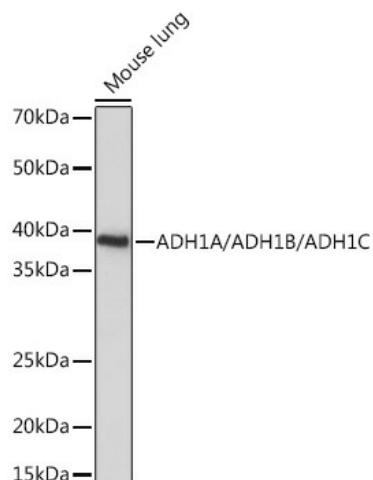
Product data:

Product Type:	Primary Antibodies
Applications:	ICC/IF, WB
Recommended Dilution:	WB,1:500 - 1:2000 IF,1:50 - 1:200
Reactivity:	Human, Mouse, Rat
Host:	Rabbit
Isotype:	IgG
Clonality:	Polyclonal
Immunogen:	A synthetic peptide corresponding to a sequence within amino acids 280 to the C-terminus of human ADH1A/ADH1B/ADH1C (NP_000659.2).
Formulation:	Buffer: PBS with 0.02% sodium azide,50% glycerol,pH7.3.
Concentration:	lot specific
Purification:	Affinity purification
Conjugation:	Unconjugated
Storage:	Store at -20°C. Avoid freeze / thaw cycles.
Stability:	Shelf life: one year from despatch.
Gene Name:	alcohol dehydrogenase 1A (class I), alpha polypeptide
Database Link:	Entrez Gene 124 Human P07327
Background:	Alcohol dehydrogenase,consisting of several homo- and heterodimers of alpha, beta, and gamma subunits, exhibits high activity for ethanol oxidation and plays a major role in ethanol catabolism.Members of this enzyme family metabolize a wide variety of substrates, including ethanol, retinol, other aliphatic alcohols, hydroxysteroids, and lipid peroxidation products. Three genes encoding alpha, beta and gamma subunits are tandemly organized in a genomic segment as a gene cluster.
Synonyms:	ADH1

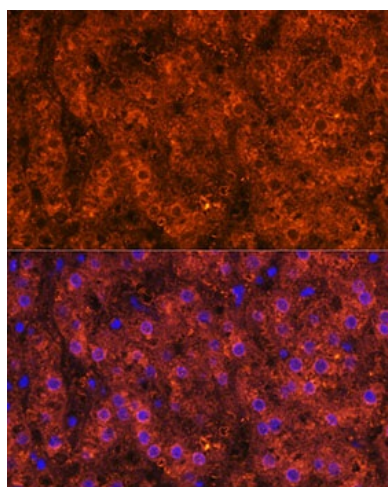


[View online »](#)

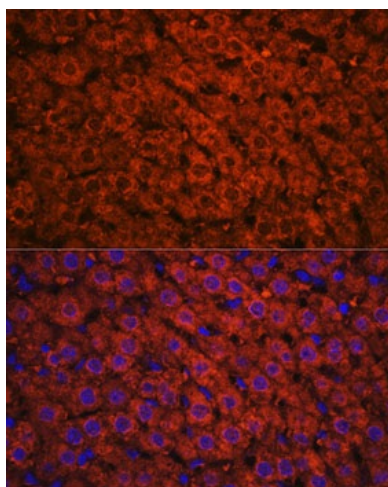
Product images:



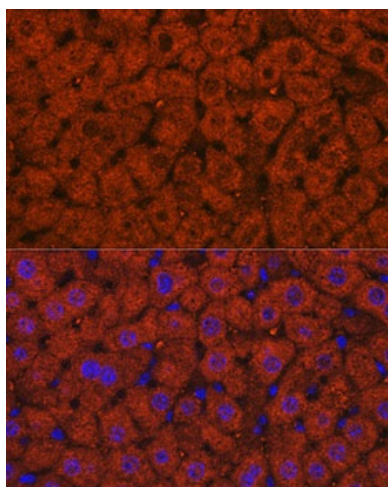
Western blot analysis of extracts of Mouse lung, using ADH1A/ADH1B/ADH1^C Rabbit pAb (TA373296) at 1:1000 dilution. | Secondary antibody: HRP Goat Anti-Rabbit IgG (H+L) at 1:10000 dilution. | Lysates/proteins: 25ug per lane. | Blocking buffer: 3% nonfat dry milk in TBST. | Detection: ECL Basic Kit . | Exposure time: 10s.



Immunofluorescence analysis of Human liver using ADH1A/ADH1B/ADH1^C Rabbit pAb (TA373296) at dilution of 1:100. Blue: DAPI for nuclear staining.



Immunofluorescence analysis of Rat liver using ADH1A/ADH1B/ADH1^c Rabbit pAb (TA373296) at dilution of 1:100. Blue: DAPI for nuclear staining.



Immunofluorescence analysis of Mouse liver using ADH1A/ADH1B/ADH1^c Rabbit pAb (TA373296) at dilution of 1:100. Blue: DAPI for nuclear staining.