

Product datasheet for **TA373286**

GPR125 (ADGRA3) Rabbit Polyclonal Antibody

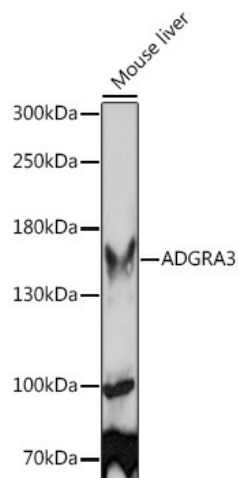
Product data:

Product Type:	Primary Antibodies
Applications:	WB
Recommended Dilution:	WB,1:200 - 1:2000
Reactivity:	Mouse, Rat
Modifications:	Unmodified
Host:	Rabbit
Isotype:	IgG
Clonality:	Polyclonal
Immunogen:	Recombinant fusion protein containing a sequence corresponding to amino acids 370-600 of human ADGRA3 (NP_660333.2).
Formulation:	Buffer: PBS with 0.02% sodium azide,50% glycerol,pH7.3.
Concentration:	lot specific
Purification:	Affinity purification
Conjugation:	Unconjugated
Storage:	Store at -20°C. Avoid freeze / thaw cycles.
Stability:	Shelf life: one year from despatch.
Predicted Protein Size:	42kDa/68kDa/131kDa/146kDa
Gene Name:	adhesion G protein-coupled receptor A3
Database Link:	Q8IWK6
Background:	This gene encodes a member of the G protein-coupled receptor superfamily. This membrane protein may play a role in tumor angiogenesis through its interaction with the human homolog of the Drosophila disc large tumor suppressor gene. This gene is mapped to a candidate region of chromosome 4 which may be associated with bipolar disorder and schizophrenia.



[View online »](#)

Product images:



Western blot analysis of extracts of Mouse liver, using ADGRA3 Rabbit pAb (TA373286) at 1:1000 dilution. | Secondary antibody: HRP Goat Anti-Rabbit IgG (H+L) at 1:10000 dilution. | Lysates/proteins: 25ug per lane. | Blocking buffer: 3% nonfat dry milk in TBST. | Detection: ECL Basic Kit . | Exposure time: 3min.