

## Product datasheet for **TA373280**

### ADCY10 Rabbit Polyclonal Antibody

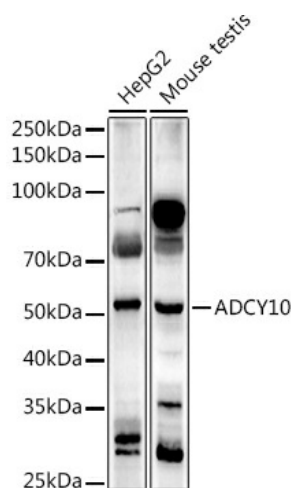
#### Product data:

Product Type:	Primary Antibodies
Applications:	WB
Recommended Dilution:	WB,1:500 - 1:2000
Reactivity:	Human, Mouse
Host:	Rabbit
Isotype:	IgG
Clonality:	Polyclonal
Immunogen:	Recombinant protein of human ADCY10.
Formulation:	Buffer: PBS with 0.02% sodium azide,50% glycerol,pH7.3.
Concentration:	lot specific
Purification:	Affinity purification
Conjugation:	Unconjugated
Storage:	Store at -20°C. Avoid freeze / thaw cycles.
Stability:	Shelf life: one year from despatch.
Gene Name:	adenylate cyclase 10 (soluble)
Database Link:	<a href="#">Entrez Gene 55811 Human Q96PN6</a>
Background:	The protein encoded by this gene belongs to a distinct class of adenylyl cyclases that is soluble and insensitive to G protein or forskolin regulation. Activity of this protein is regulated by bicarbonate. Variation at this gene has been observed in patients with absorptive hypercalciuria. Alternatively spliced transcript variants encoding different isoforms have been observed. There is a pseudogene of this gene on chromosome 6. [provided by RefSeq, Jul 2014]
Synonyms:	HCA2; hsAC; RP1-313L4.2; SAC; SACI; Sacy



[View online »](#)

## Product images:



Western blot analysis of extracts of various cell lines, using ADCY10 antibody (TA373280) at 1:1000 dilution. | Secondary antibody: HRP Goat Anti-Rabbit IgG (H+L) at 1:10000 dilution. | Lysates/proteins: 25ug per lane. | Blocking buffer: 3% nonfat dry milk in TBST. | Detection: ECL Basic Kit . | Exposure time: 180s.