

Product datasheet for **TA373272**

Centaurin alpha 1 (ADAP1) Rabbit Polyclonal Antibody

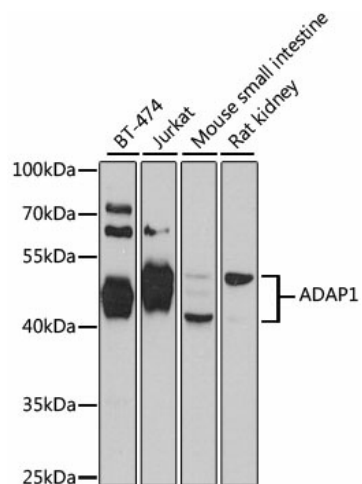
Product data:

Product Type:	Primary Antibodies
Applications:	IF, WB
Recommended Dilution:	WB,1:500 - 1:2000 IF,1:50 - 1:200
Reactivity:	Human, Mouse, Rat
Modifications:	Unmodified
Host:	Rabbit
Isotype:	IgG
Clonality:	Polyclonal
Immunogen:	Recombinant fusion protein containing a sequence corresponding to amino acids 1-374 of human ADAP1 (NP_006860.1).
Formulation:	Buffer: PBS with 0.02% sodium azide,50% glycerol,pH7.3.
Concentration:	lot specific
Purification:	Affinity purification
Conjugation:	Unconjugated
Storage:	Store at -20°C. Avoid freeze / thaw cycles.
Stability:	Shelf life: one year from despatch.
Predicted Protein Size:	35kDa/43kDa/44kDa
Gene Name:	ArfGAP with dual PH domains 1
Database Link:	Entrez Gene 11033 Human O75689
Background:	GTPase-activating protein for the ADP ribosylation factor family (Probable. Binds phosphatidylinositol 3,4,5-trisphosphate (PtdInsP3 and inositol 1,3,4,5-tetrakisphosphate (InsP4.
Synonyms:	CENTA1; centaurin-alpha; Centaurin-alpha-1; GCS1L; p42IP4



[View online »](#)

Product images:



Western blot analysis of extracts of various cell lines, using ADAP1 antibody (TA373272) at 1:1000 dilution. | Secondary antibody: HRP Goat Anti-Rabbit IgG (H+L) at 1:10000 dilution. | Lysates/proteins: 25ug per lane. | Blocking buffer: 3% nonfat dry milk in TBST. | Detection: ECL Basic Kit . | Exposure time: 30s.