

Product datasheet for **TA373266**

ADAMTS13 Rabbit Polyclonal Antibody

Product data:

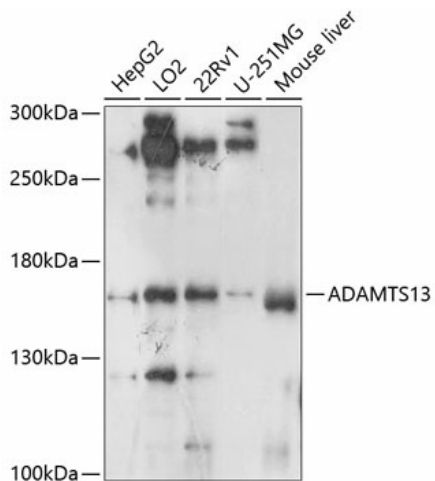
Product Type:	Primary Antibodies
Applications:	ICC/IF, WB
Recommended Dilution:	WB,1:500 - 1:2000 IF,1:50 - 1:200
Reactivity:	Human, Mouse, Rat
Modifications:	Unmodified
Host:	Rabbit
Isotype:	IgG
Clonality:	Polyclonal
Immunogen:	A synthetic peptide corresponding to a sequence within amino acids 1300-1400 of human ADAMTS13 (NP_620594.1).
Formulation:	Buffer: PBS with 0.02% sodium azide,50% glycerol,pH7.3.
Concentration:	lot specific
Purification:	Affinity purification
Conjugation:	Unconjugated
Storage:	Store at -20°C. Avoid freeze / thaw cycles.
Stability:	Shelf life: one year from despatch.
Predicted Protein Size:	39kDa/144kDa/147kDa/153kDa
Gene Name:	ADAM metalloproteinase with thrombospondin type 1 motif 13
Database Link:	Entrez Gene 11093 Human Q76LX8
Background:	This gene encodes a member of a family of proteins containing several distinct regions, including a metalloproteinase domain, a disintegrin-like domain, and a thrombospondin type 1 (TS) motif. The enzyme encoded by this gene specifically cleaves von Willebrand Factor (vWF). Defects in this gene are associated with thrombotic thrombocytopenic purpura. Alternative splicing results in multiple transcript variants.



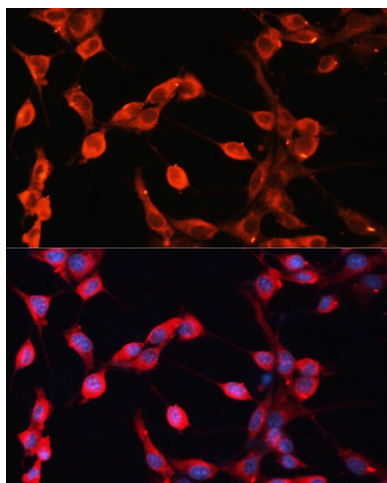
[View online »](#)

Synonyms: ADAM-TS13; ADAMTS-13; C9orf8; DKFZp434C2322; FLJ42993; MGC118899; MGC118900; TTP; vWF-CP; VWFCP

Product images:



Western blot analysis of extracts of various cell lines, using ADAMTS13 antibody (TA373266) at 1:1000 dilution. | Secondary antibody: HRP Goat Anti-Rabbit IgG (H+L) at 1:10000 dilution. | Lysates/proteins: 25ug per lane. | Blocking buffer: 3% nonfat dry milk in TBST. | Detection: ECL Basic Kit . | Exposure time: 5s.



Immunofluorescence analysis of NIH-3T3 cells using ADAMTS13 Polyclonal Antibody (TA373266) at dilution of 1:100 (40x lens). Blue: DAPI for nuclear staining.