

## Product datasheet for **TA373250**

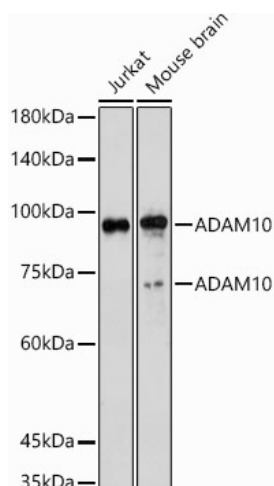
### ADAM10 Rabbit Polyclonal Antibody

#### Product data:

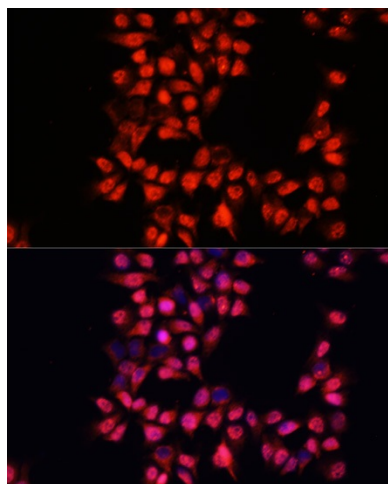
Product Type:	Primary Antibodies
Applications:	ICC/IF, WB
Recommended Dilution:	WB,1:500 - 1:2000 IF,1:50 - 1:200
Reactivity:	Human, Mouse
Modifications:	Unmodified
Host:	Rabbit
Isotype:	IgG
Clonality:	Polyclonal
Immunogen:	Recombinant fusion protein containing a sequence corresponding to amino acids 214-500 of human ADAM10 (NP_001101.1).
Formulation:	Buffer: PBS with 0.02% sodium azide,50% glycerol,pH7.3.
Concentration:	lot specific
Purification:	Affinity purification
Conjugation:	Unconjugated
Storage:	Store at -20°C. Avoid freeze / thaw cycles.
Stability:	Shelf life: one year from despatch.
Predicted Protein Size:	49kDa/84kDa
Gene Name:	ADAM metalloproteinase domain 10
Database Link:	<a href="#">Entrez Gene 102 Human</a> <a href="#">Q14672</a>
Background:	Members of the ADAM family are cell surface proteins with a unique structure possessing both potential adhesion and protease domains. This gene encodes an ADAM family member that cleaves many proteins including TNF-alpha and E-cadherin. Alternate splicing results in multiple transcript variants encoding different proteins that may undergo similar processing.
Synonyms:	AD10; CD156c; CDw156; HsT18717; kuz; kuzbanian; MADM



[View online »](#)

**Product images:**

Western blot analysis of extracts of various cell lines, using ADAM10 antibody (TA373250) at 1:1000 dilution. | Secondary antibody: HRP Goat Anti-Rabbit IgG (H+L) at 1:10000 dilution. | Lysates/proteins: 25ug per lane. | Blocking buffer: 3% nonfat dry milk in TBST. | Detection: ECL Enhanced Kit . | Exposure time: 180s.



Immunofluorescence analysis of HeLa cells using ADAM10 antibody (TA373250) at dilution of 1:100. Blue: DAPI for nuclear staining.