

## Product datasheet for **TA373237**

### ACTR6 Rabbit Polyclonal Antibody

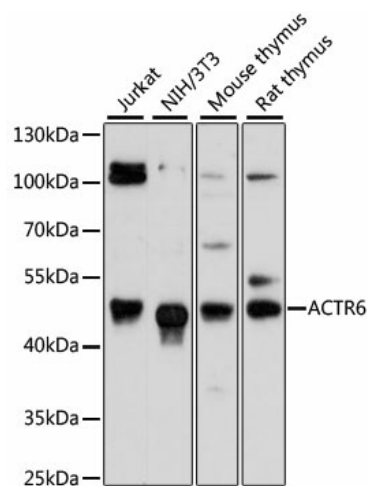
#### Product data:

Product Type:	Primary Antibodies
Applications:	WB
Recommended Dilution:	WB,1:500 - 1:2000
Reactivity:	Human, Mouse, Rat
Modifications:	Unmodified
Host:	Rabbit
Isotype:	IgG
Clonality:	Polyclonal
Immunogen:	Recombinant fusion protein containing a sequence corresponding to amino acids 237-396 of human ACTR6 (NP_071941.1).
Formulation:	Buffer: PBS with 0.02% sodium azide,50% glycerol,pH7.3.
Concentration:	lot specific
Purification:	Affinity purification
Conjugation:	Unconjugated
Storage:	Store at -20°C. Avoid freeze / thaw cycles.
Stability:	Shelf life: one year from despatch.
Predicted Protein Size:	21kDa/45kDa
Gene Name:	ARP6 actin-related protein 6 homolog
Database Link:	<a href="#">Entrez Gene 64431 Human Q9GZN1</a>
Synonyms:	ARP6; CDA12; FLJ13433; hARP6; hARPX; HSPC281; MSTP136



[View online »](#)

## Product images:



Western blot analysis of extracts of various cell lines, using ACTR6 antibody (TA373237) at 1:3000 dilution. | Secondary antibody: HRP Goat Anti-Rabbit IgG (H+L) at 1:10000 dilution. | Lysates/proteins: 25ug per lane. | Blocking buffer: 3% nonfat dry milk in TBST. | Detection: ECL Basic Kit . | Exposure time: 90s.