

## Product datasheet for **TA373233S**

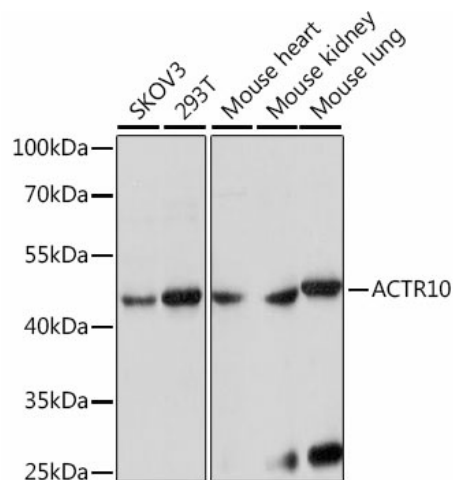
### ACTR10 Rabbit Polyclonal Antibody

#### Product data:

Product Type:	Primary Antibodies
Applications:	ELISA, WB
Recommended Dilution:	WB, 1:500 - 1:2000 ELISA, Recommended starting concentration is 1 µg/mL. Please optimize the concentration based on your specific assay requirements.
Reactivity:	Human, Mouse, Rat
Modifications:	Unmodified
Host:	Rabbit
Isotype:	IgG
Clonality:	Polyclonal
Formulation:	Buffer: PBS with 0.02% sodium azide, 50% glycerol, pH 7.3.
Concentration:	lot specific
Purification:	Affinity purification
Conjugation:	Unconjugated
Storage:	Store at -20°C. Avoid freeze / thaw cycles.
Stability:	Shelf life: one year from despatch.
Predicted Protein Size:	46kDa
Gene Name:	actin-related protein 10 homolog
Database Link:	<a href="#">Entrez Gene 55860 Human Q9NZ32</a>
Background:	Predicted to be involved in retrograde axonal transport of mitochondrion. Predicted to be located in cytosol; extracellular region; and secretory granule. Predicted to be part of dynactin complex.
Synonyms:	ACTR11; ARP11; HARP11



[View online »](#)

**Product images:**

Western blot analysis of various lysates using ACTR10 Rabbit pAb ([TA373233]) at 1:1000 dilution.

Secondary antibody: HRP-conjugated Goat anti-Rabbit IgG (H+L) at 1:10000 dilution.

Lysates/proteins: 25µg per lane.

Blocking buffer: 3% nonfat dry milk in TBST.

Detection: ECL Basic Kit .

Exposure time: 30s.