

Product datasheet for **TA373223**

ACTC1 Rabbit Polyclonal Antibody

Product data:

Product Type:	Primary Antibodies
Applications:	IHC, WB
Recommended Dilution:	WB,1:500 - 1:2000 IHC,1:50 - 1:200
Reactivity:	Human, Mouse, Rat
Modifications:	Unmodified
Host:	Rabbit
Isotype:	IgG
Clonality:	Polyclonal
Immunogen:	Recombinant protein of human ACTC1.
Formulation:	Buffer: PBS with 0.02% sodium azide,pH7.3.
Concentration:	lot specific
Purification:	Affinity purification
Conjugation:	Unconjugated
Storage:	Store at 4°C. Avoid freeze / thaw cycles. Buffer: PBS with 0.02% sodium azide,pH7.3.
Stability:	Shelf life: one year from despatch.
Predicted Protein Size:	42kDa
Gene Name:	actin, alpha, cardiac muscle 1
Database Link:	Entrez Gene 70 Human P68032

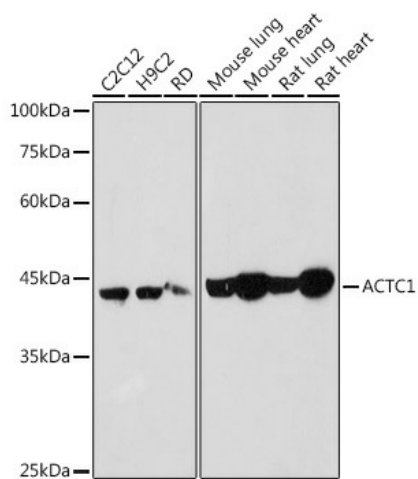
Background: Actins are highly conserved proteins that are involved in various types of cell motility. Polymerization of globular actin (G-actin) leads to a structural filament (F-actin) in the form of a two-stranded helix. Each actin can bind to four others. The protein encoded by this gene belongs to the actin family which is comprised of three main groups of actin isoforms, alpha, beta, and gamma. The alpha actins are found in muscle tissues and are a major constituent of the contractile apparatus. Defects in this gene have been associated with idiopathic dilated cardiomyopathy (IDC) and familial hypertrophic cardiomyopathy (FHC).



[View online »](#)

Synonyms: ACTC; ASD5; CMD1R; CMH11

Product images:



Western blot analysis of extracts of various cell lines, using ACTC1 antibody (TA373223) at 1:1000 dilution. | Secondary antibody: HRP Goat Anti-Rabbit IgG (H+L) at 1:10000 dilution. | Lysates/proteins: 25ug per lane. | Blocking buffer: 3% nonfat dry milk in TBST. | Detection: ECL Basic Kit . | Exposure time: 10s.