

Product datasheet for **TA373216S**

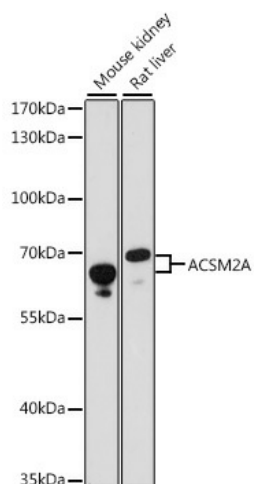
ACSM2A Rabbit Polyclonal Antibody

Product data:

Product Type:	Primary Antibodies
Applications:	ELISA, WB
Recommended Dilution:	WB, 1:200 - 1:2000 ELISA, Recommended starting concentration is 1 µg/mL. Please optimize the concentration based on your specific assay requirements.
Reactivity:	Mouse, Rat
Modifications:	Unmodified
Host:	Rabbit
Isotype:	IgG
Clonality:	Polyclonal
Formulation:	PBS with 0.05% proclin300, 50% glycerol, pH7.3.
Concentration:	lot specific
Purification:	Affinity purification
Conjugation:	Unconjugated
Storage:	Store at -20°C. Avoid freeze / thaw cycles.
Stability:	Shelf life: one year from despatch.
Predicted Protein Size:	64kDa
Gene Name:	acyl-CoA synthetase medium-chain family member 2A
Database Link:	Q08AH3
Background:	This gene encodes a mitochondrial acyl-coenzyme A synthetase that is specific for medium chain fatty acids. These enzymes catalyze fatty acid activation, the first step of fatty acid metabolism, through the transfer of acyl-CoA. These enzymes also participate in the glycine conjugation pathway in the detoxification of xenobiotics such as benzoate and ibuprofen. Expression levels of this gene in the kidney may be correlated with kidney function. This gene and its paralog ACSM2B (Gene ID: 348158), both present on chromosome 16, likely arose from a chromosomal duplication event.
Synonyms:	A-923A4.1; ACSM2; MACS2; MGC150530


[View online »](#)

Product images:



Western blot analysis of various lysates using ACSM2A Rabbit pAb ([TA373216]) at 1:1000 dilution.

Secondary antibody: HRP-conjugated Goat anti-Rabbit IgG (H+L) (AS014) at 1:10000 dilution.

Lysates/proteins: 25µg per lane.

Blocking buffer: 3% nonfat dry milk in TBST.

Detection: ECL Basic Kit (RM00020).

Exposure time: 60s.