

## Product datasheet for **TA373164S**

### **ABLIM2 Rabbit Polyclonal Antibody**

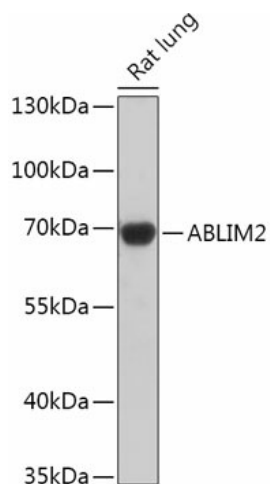
#### **Product data:**

<b>Product Type:</b>	Primary Antibodies
<b>Applications:</b>	WB
<b>Recommended Dilution:</b>	WB,1:500 - 1:2000
<b>Reactivity:</b>	Mouse, Rat
<b>Modifications:</b>	Unmodified
<b>Host:</b>	Rabbit
<b>Isotype:</b>	IgG
<b>Clonality:</b>	Polyclonal
<b>Immunogen:</b>	Recombinant fusion protein containing a sequence corresponding to amino acids 74-309 of human ABLIM2 (NP_115808.3).
<b>Formulation:</b>	Buffer: PBS with 0.02% sodium azide,50% glycerol,pH7.3.
<b>Concentration:</b>	lot specific
<b>Purification:</b>	Affinity purification
<b>Conjugation:</b>	Unconjugated
<b>Storage:</b>	Store at -20°C. Avoid freeze / thaw cycles.
<b>Stability:</b>	Shelf life: one year from despatch.
<b>Gene Name:</b>	actin binding LIM protein family member 2
<b>Database Link:</b>	<a href="#">Q6H8Q1</a>
<b>Background:</b>	May act as scaffold protein. May stimulate ABRA activity and ABRA-dependent SRF transcriptional activity.
<b>Synonyms:</b>	abLIM-2; DKFZp761F129; FLJ26534; FLJ39684; KIAA1808; MGC141918



[View online »](#)

## Product images:



Western blot analysis of extracts of Rat lung, using ABLIM2 antibody ([TA373164]) at 1:1000 dilution. | Secondary antibody: HRP Goat Anti-Rabbit IgG (H+L) at 1:10000 dilution. | Lysates/proteins: 25ug per lane. | Blocking buffer: 3% nonfat dry milk in TBST. | Detection: ECL Basic Kit . | Exposure time: 90s.