

Product datasheet for **TA373164**

ABLIM2 Rabbit Polyclonal Antibody

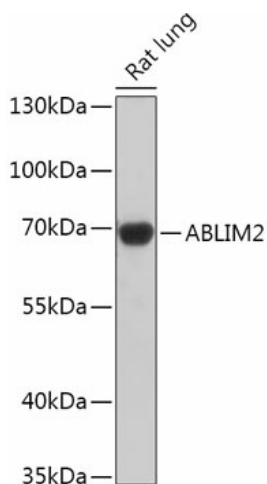
Product data:

Product Type:	Primary Antibodies
Applications:	WB
Recommended Dilution:	WB,1:500 - 1:2000
Reactivity:	Mouse, Rat
Modifications:	Unmodified
Host:	Rabbit
Isotype:	IgG
Clonality:	Polyclonal
Immunogen:	Recombinant fusion protein containing a sequence corresponding to amino acids 74-309 of human ABLIM2 (NP_115808.3).
Formulation:	Buffer: PBS with 0.02% sodium azide,50% glycerol,pH7.3.
Concentration:	lot specific
Purification:	Affinity purification
Conjugation:	Unconjugated
Storage:	Store at -20°C. Avoid freeze / thaw cycles.
Stability:	Shelf life: one year from despatch.
Gene Name:	actin binding LIM protein family member 2
Database Link:	Q6H8Q1
Background:	May act as scaffold protein. May stimulate ABRA activity and ABRA-dependent SRF transcriptional activity.
Synonyms:	abLIM-2; DKFZp761F129; FLJ26534; FLJ39684; KIAA1808; MGC141918



[View online »](#)

Product images:



Western blot analysis of extracts of Rat lung, using ABLIM2 antibody (TA373164) at 1:1000 dilution. | Secondary antibody: HRP Goat Anti-Rabbit IgG (H+L) at 1:10000 dilution. | Lysates/proteins: 25ug per lane. | Blocking buffer: 3% nonfat dry milk in TBST. | Detection: ECL Basic Kit . | Exposure time: 90s.